



TECHNICAL CATALOGUE

# ITAP-FIT<sup>®</sup> FITTINGS

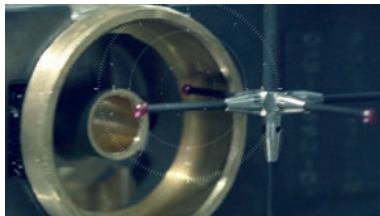
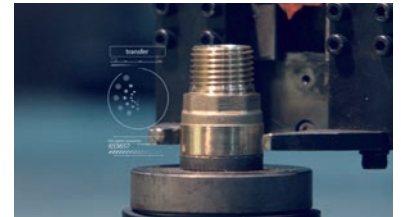
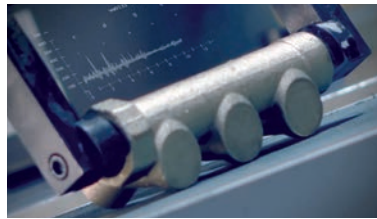
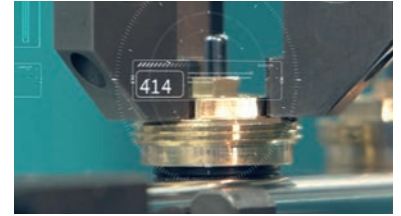
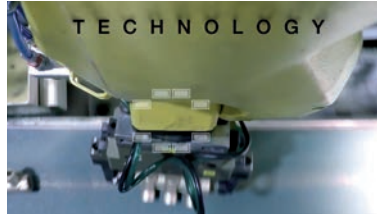


## > THE COMPANY

ITAP SpA, founded in Lumezzane (Brescia) in 1972, is currently one of the leading production companies in Italy of **valves, fittings and distribution manifolds** for plumbing and heating systems.

Thanks to a fully automated production process, with 85 transfer machines and 55 assembly lines, it is capable of producing 400,000 pieces per day.

Our innate pursuit for innovation and observance of technical regulations is supported by the company certification ISO 9001. The company has always considered its focus on quality as the main tool to obtain significant business results: today ITAP SpA is proud to offer products bearing the approval of numerous international certifying bodies.



> ITAP products have obtained approvals by more than 30 certification bodies from all over the world.





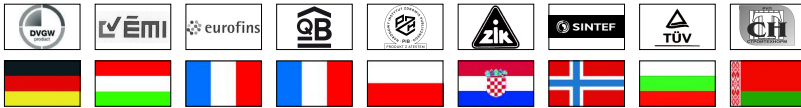
# ITAP-FIT® FITTINGS

## 610 Straight female connector



MEASURE	CODE	PACKING
12x3/8"	610B038012	18/252
12x1/2"	610B012012	14/196
14x1/2"	610B012014	14/196
15x1/2"	610B012015	14/196
16x1/2"	610B012016	14/196
18x1/2"	610B012018	7/182
18x3/4"	610B034018	7/98
20x1/2"	610B012020	10/140
22x3/4"	610B034022	5/130
25x3/4"	610B034025	8/112
28x1"	610B100028	5/55

### CERTIFICATIONS



### TECHNICAL SPECIFICATIONS

Bodies in de-zincification resistant brass (DZR).

Minimum and maximum working temperatures: -20°C, 120°C (allowed peaks of 150°C).

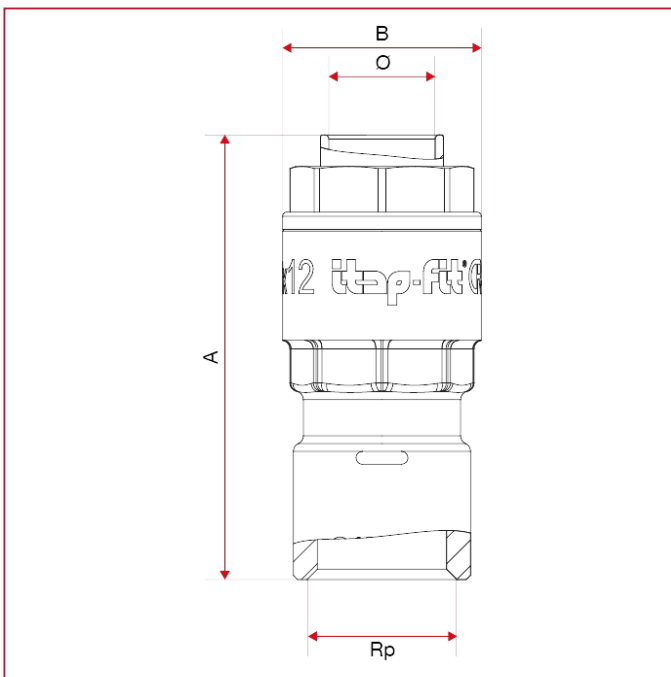
Nominal pressure:

Copper pipe: 20bar at 25°C, 10bar at 90°C.

PEX and polybutylene pipes: 12bar at 25°C, 5 bar at 90°C.

Threads: ISO 7/1 (equivalent to DIN EN 10226-1 and BS EN 10226-1).

### OVERALL DIMENSIONS

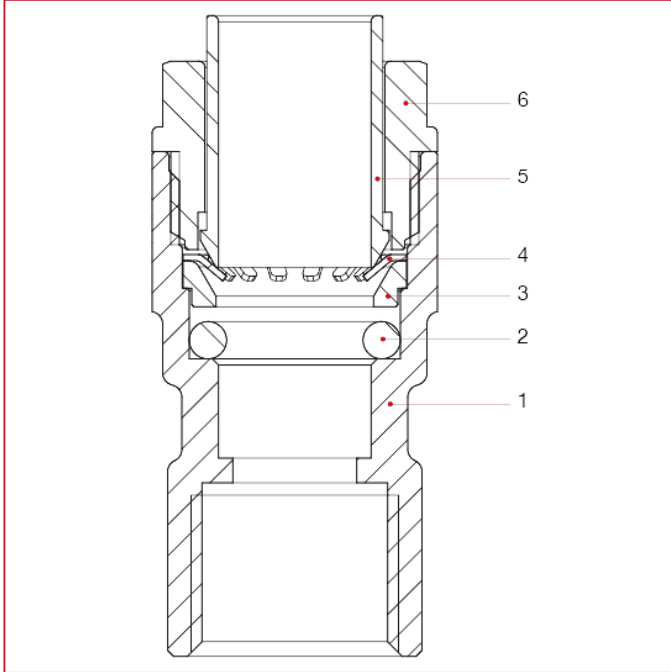




# ITAP-FIT<sup>®</sup> FITTINGS

	12x3/8"	12x1/2"	14x1/2"	15x1/2"	16x1/2"	18x1/2"	18x3/4"	20x1/2"	22x3/4"	25x3/4"	28x1"
A	51,6	55	55	55	55	59	59,6	62	62	64	70
B	23	23	25	26	27	31,5	31,5	34	36	40	43,7

## MATERIALS



POS.	DESCRIPTION	N.	MATERIAL
1	Body	1	Brass CW625N
2	O-ring	1	EPDM
3	Spacer	1	NIRETAN A EXL SC
4	Fastening ring	1	Stainless steel AISI 301
5	Release collar	1	GRIVORY GV-5H
6	End adapter	1	GRIVORY GV-5H



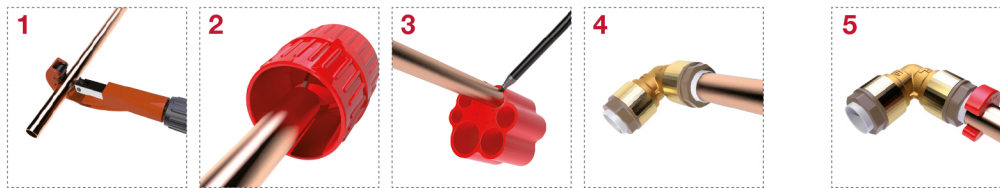
# ITAP-FIT<sup>®</sup> FITTINGS

## INSTRUCTIONS



### FOUR SIMPLE STEPS FOR A SAFE INSTALLATION

1. Cut the pipe by a rotary pipe cutter.
  2. Deburr the external surface of the pipe.
  3. Insert the pipe in the depth gauge and mark the pipe.
  4. Insert the pipe by pushing it as far as it reaches the blocking point, that should correspond to the mark made before.
- If you are using cross-linked polyethylene pipes (PEX) or polybutylene pipes you have to insert the liner before the connection.

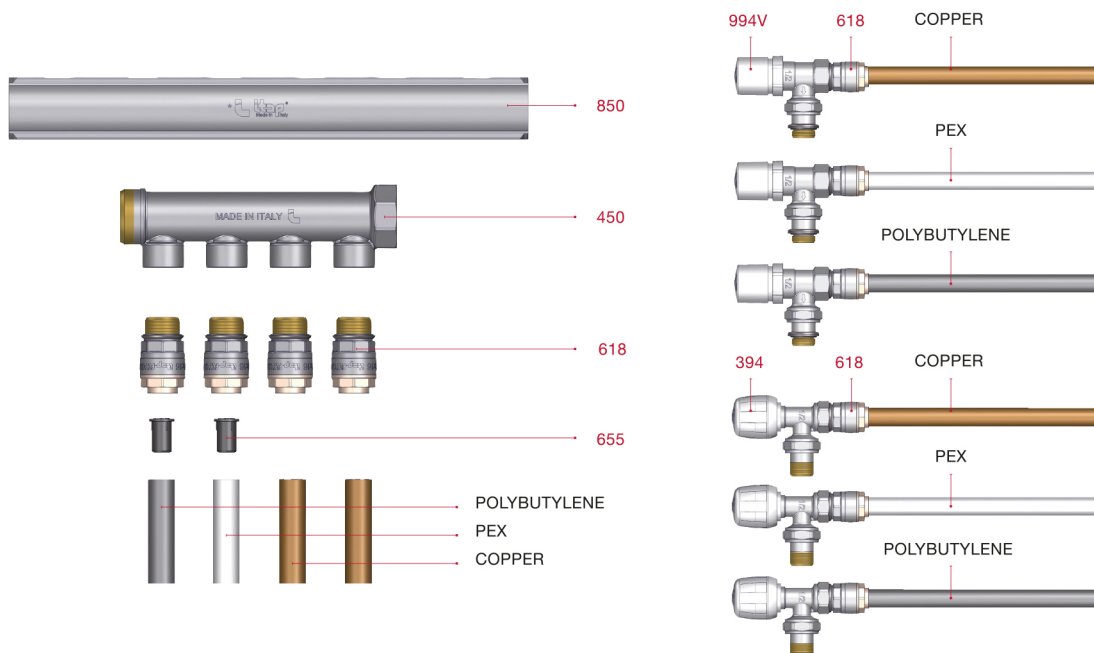


5. To disconnect the fitting you just need to push the release liner by the clip and at the same time pull the pipe.

### ADVANTAGES:

- SAVING OF TIME DURING THE INSTALLATION AS FAR AS 90%
- SUITABLE FOR SANITARY AND HEATING PLANTS
- NO NEED OF SPECIAL OR EXPENSIVE TOOLS FOR THE INSTALLATION
- THE CONNECTION IS REVERSIBLE

### USE OF THE FITTINGS WITH COPPER, PEX AND POLYBUTYLENE PIPE





# ITAP-FIT® FITTINGS

## 615 Straight male connector



MEASURE	CODE	PACKING
12x3/8"	615B038012	24/336
12x1/2"	615B012012	18/252
14x3/8"	615B038014	18/252
14x1/2"	615B012014	18/252
15x1/2"	615B012015	18/252
16x1/2"	615B012016	15/210
18x1/2"	615B012018	15/180
18x3/4"	615B034018	15/180
20x1/2"	615B012020	14/168
22x3/4"	615B034022	12/144
25x3/4"	615B034025	11/99
28x1"	615B100028	8/96

### CERTIFICATIONS



### TECHNICAL SPECIFICATIONS

Bodies in de-zincification resistant brass (DZR).

Minimum and maximum working temperatures: -20°C, 120°C (allowed peaks of 150°C).

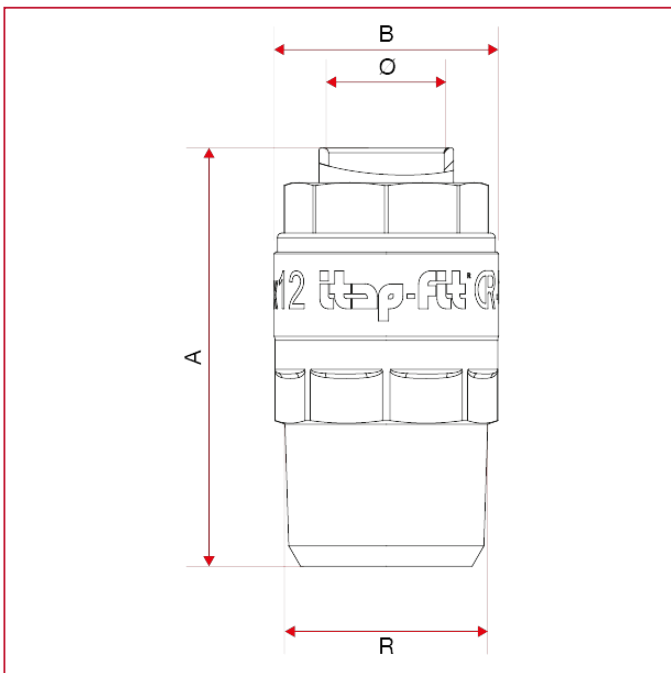
Nominal pressure:

Copper pipe: 20bar at 25°C, 10bar at 90°C.

PEX and polybutylene pipes: 12bar at 25°C, 5 bar at 90°C.

Threads: ISO 7/1 (equivalent to DIN EN 10226-1 and BS EN 10226-1).

### OVERALL DIMENSIONS

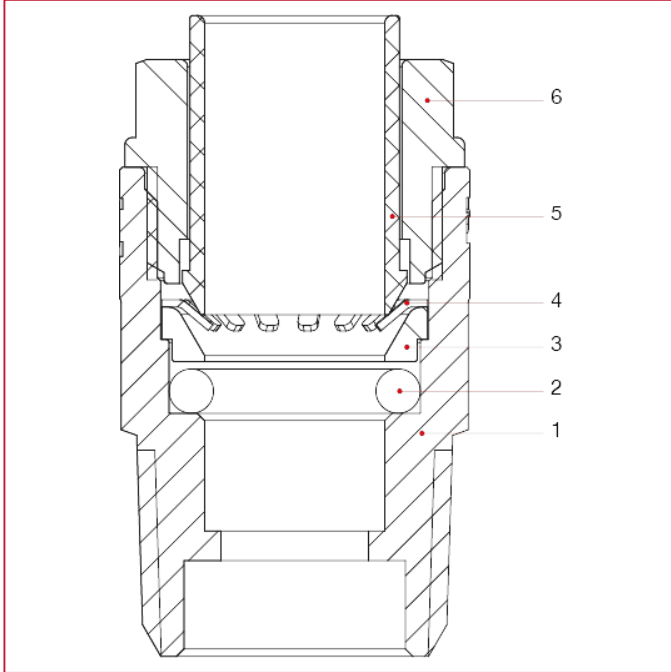




# ITAP-FIT<sup>®</sup> FITTINGS

	12x3/8"	12x1/2"	14x3/8"	14x1/2"	15x1/2"	16x1/2"	18x1/2"	18x3/4"	20x1/2"	22x3/4"	25x3/4"	28x1"
A	40,7	44	44,6	45,5	45	45,5	55,6	49,3	59,4	60,4	63	66
B	23	23,7	25	25	26	27	31,5	31,5	34	36	40	43,7

## MATERIALS



POS.	DESCRIPTION	N.	MATERIAL
1	Body	1	Brass CW625N
2	O-ring	1	EPDM
3	Spacer	1	NIRETAN A EXL SC
4	Fastening ring	1	Stainless steel AISI 301
5	Release collar	1	GRIVORY GV-5H
6	End adapter	1	GRIVORY GV-5H



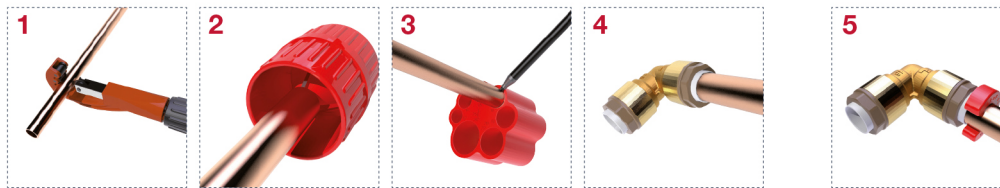
# ITAP-FIT<sup>®</sup> FITTINGS

## INSTRUCTIONS



### FOUR SIMPLE STEPS FOR A SAFE INSTALLATION

1. Cut the pipe by a rotary pipe cutter.
  2. Deburr the external surface of the pipe.
  3. Insert the pipe in the depth gauge and mark the pipe.
  4. Insert the pipe by pushing it as far as it reaches the blocking point, that should correspond to the mark made before.
- If you are using cross-linked polyethylene pipes (PEX) or polybutylene pipes you have to insert the liner before the connection.

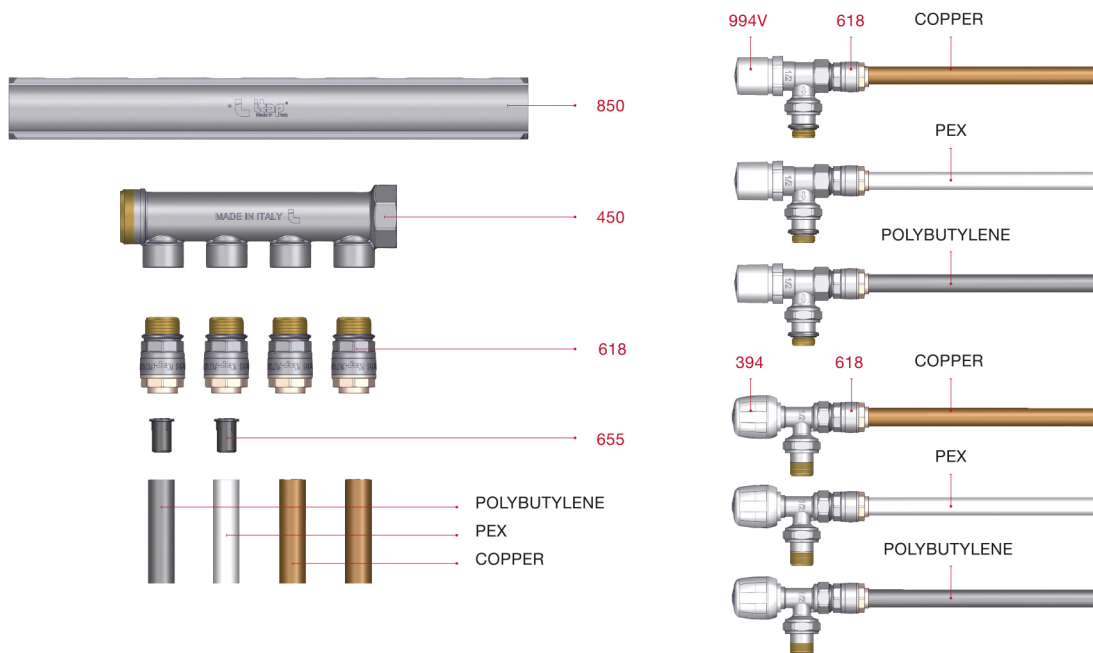


5. To disconnect the fitting you just need to push the release liner by the clip and at the same time pull the pipe.

### ADVANTAGES:

- SAVING OF TIME DURING THE INSTALLATION AS FAR AS 90%
- SUITABLE FOR SANITARY AND HEATING PLANTS
- NO NEED OF SPECIAL OR EXPENSIVE TOOLS FOR THE INSTALLATION
- THE CONNECTION IS REVERSIBLE

### USE OF THE FITTINGS WITH COPPER, PEX AND POLYBUTYLENE PIPE





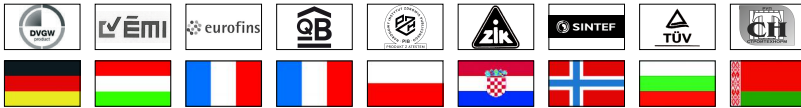
# ITAP-FIT® FITTINGS

## 620 Straight coupling



MEASURE	CODE	PACKING
12	620C000012	12/168
14	620C000014	12/168
15	620C000015	12/168
16	620C000016	12/168
18	620C000018	12/144
20	620C000020	10/110
22	620C000022	8/96
25	620C000025	7/84
28	620C000028	6/66

### CERTIFICATIONS



### TECHNICAL SPECIFICATIONS

Bodies in de-zincification resistant brass (DZR).

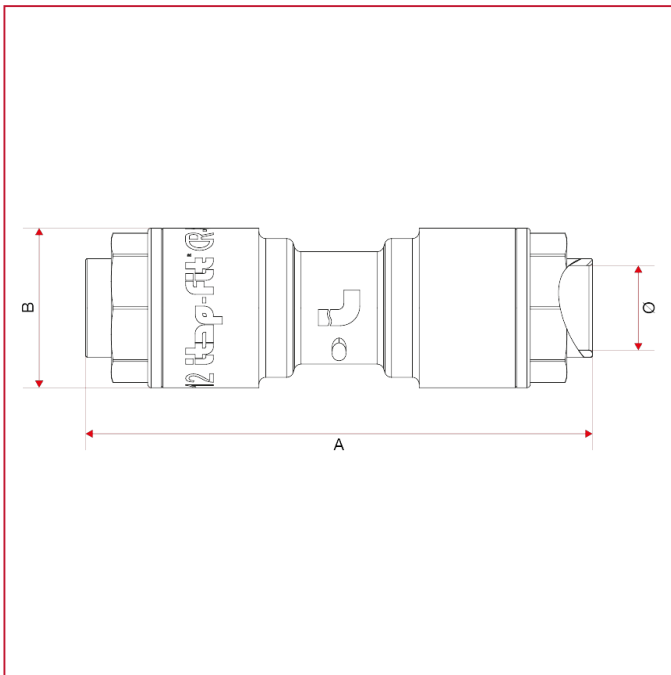
Minimum and maximum working temperatures: -20°C, 120°C (allowed peaks of 150°C).

Nominal pressure:

Copper pipe: 20bar at 25°C, 10bar at 90°C.

PEX and polybutylene pipes: 12bar at 25°C, 5 bar at 90°C.

### OVERALL DIMENSIONS

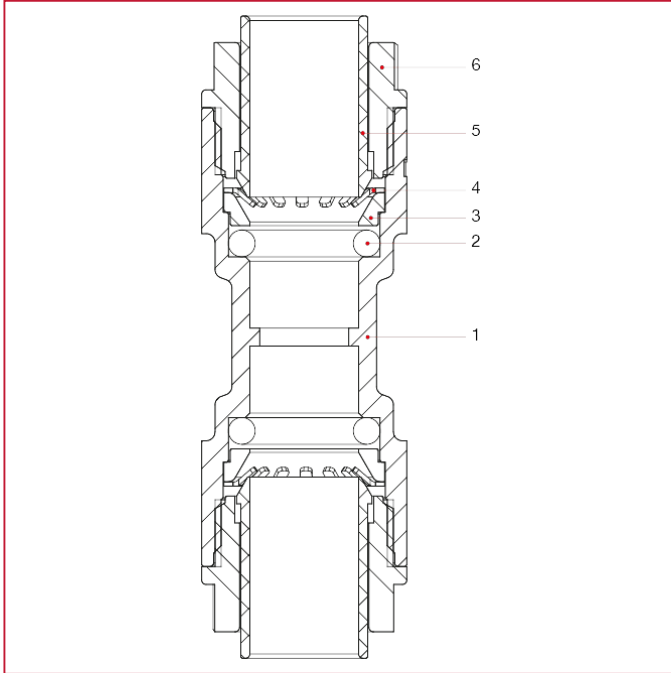


	12	14	15	16	18	20	22	25	28
A	73,4	73,2	72,8	73	81,2	86,8	85,8	89,8	91,8
B	23	25	26	27	31,5	34	36	40	43,7



# ITAP-FIT<sup>®</sup> FITTINGS

## MATERIALS



POS.	DESCRIPTION	N.	MATERIAL
1	Body	1	Brass CW625N
2	O-ring	2	EPDM
3	Spacer	2	NIRETAN A EXL SC
4	Fastening ring	2	Stainless steel AISI 301
5	Release collar	2	GRIVORY GV-5H
6	End adapter	2	GRIVORY GV-5H



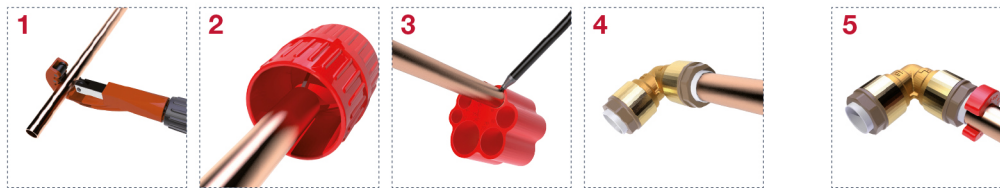
# ITAP-FIT<sup>®</sup> FITTINGS

## INSTRUCTIONS



### FOUR SIMPLE STEPS FOR A SAFE INSTALLATION

1. Cut the pipe by a rotary pipe cutter.
  2. Deburr the external surface of the pipe.
  3. Insert the pipe in the depth gauge and mark the pipe.
  4. Insert the pipe by pushing it as far as it reaches the blocking point, that should correspond to the mark made before.
- If you are using cross-linked polyethylene pipes (PEX) or polybutylene pipes you have to insert the liner before the connection.

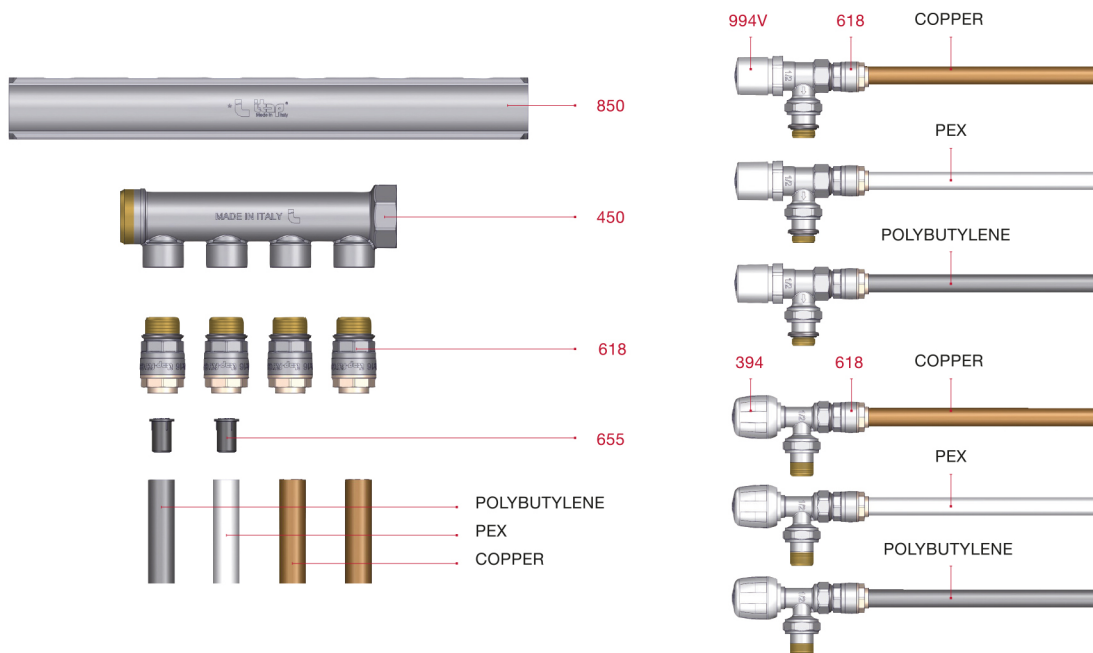


5. To disconnect the fitting you just need to push the release liner by the clip and at the same time pull the pipe.

### ADVANTAGES:

- SAVING OF TIME DURING THE INSTALLATION AS FAR AS 90%
- SUITABLE FOR SANITARY AND HEATING PLANTS
- NO NEED OF SPECIAL OR EXPENSIVE TOOLS FOR THE INSTALLATION
- THE CONNECTION IS REVERSIBLE

### USE OF THE FITTINGS WITH COPPER, PEX AND POLYBUTYLENE PIPE





# ITAP-FIT® FITTINGS

## 625 Stop end



MEASURE	CODE	PACKING
12	625C000012	30/420
14	625C000014	25/350
15	625C000015	25/350
16	625C000016	25/350
18	625C000018	16/224
20	625C000020	14/196
22	625C000022	8/208

### CERTIFICATIONS



### TECHNICAL SPECIFICATIONS

Body in brass.

Minimum and maximum working temperatures: -20°C, 120°C (allowed peaks of 150°C).

Nominal pressure:

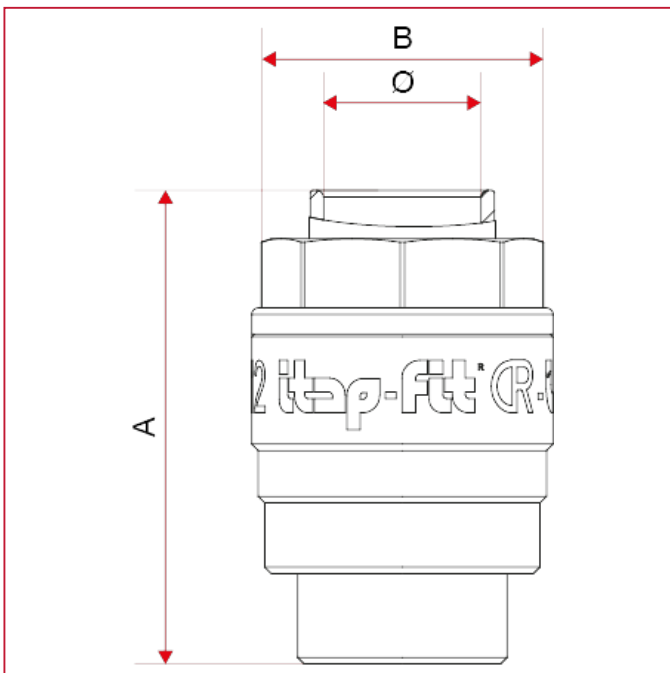
Copper pipe: 20bar at 25°C, 10bar at 90°C.

PEX and polybutylene pipes: 12bar at 25°C, 5 bar at 90°C.

Suitable as PLUG IN ORDER TO TEST INSTALLATIONS with copper, PEX, PB, multilayer pipes.

The fitting is usable again.

### OVERALL DIMENSIONS

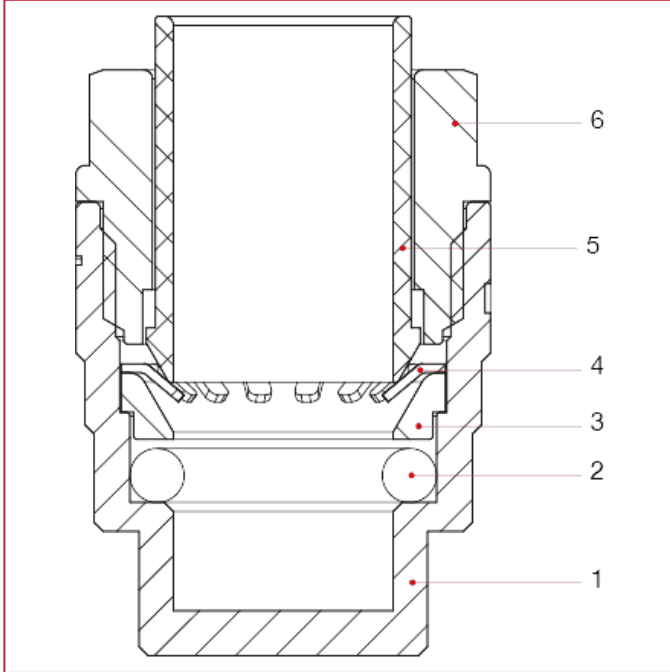




# ITAP-FIT<sup>®</sup> FITTINGS

	12	14	15	16	18	20	22
A	36	36	36	36	40	43	42,4
B	23	25	26	27	31,5	34	36

## MATERIALS



POS.	DESCRIPTION	N.	MATERIAL
1	Body	1	Brass CW614N
2	O-ring	1	EPDM
3	Spacer	1	NIRETAN A EXL SC
4	Fastening ring	1	Stainless steel AISI 301
5	Release collar	1	GRIVORY GV-5H
6	End adapter	1	GRIVORY GV-5H



# ITAP-FIT® FITTINGS

## INSTRUCTIONS



### FOUR SIMPLE STEPS FOR A SAFE INSTALLATION

1. Cut the pipe by a rotary pipe cutter.
  2. Deburr the external surface of the pipe.
  3. Insert the pipe in the depth gauge and mark the pipe.
  4. Insert the pipe by pushing it as far as it reaches the blocking point, that should correspond to the mark made before.
- If you are using cross-linked polyethylene pipes (PEX) or polybutylene pipes you have to insert the liner before the connection.

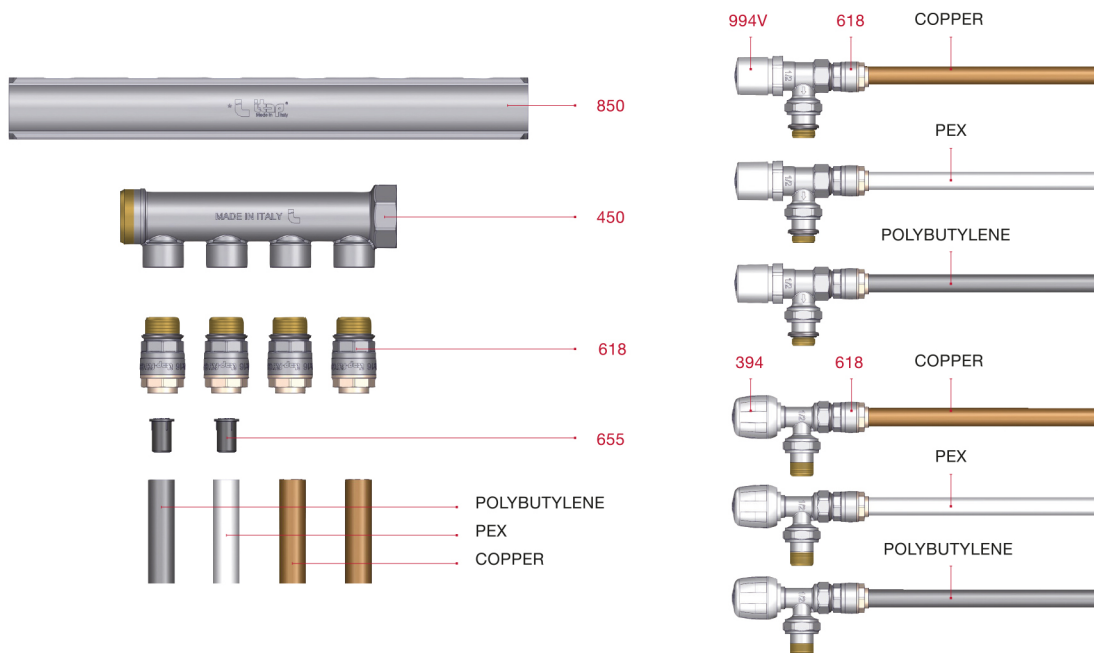


5. To disconnect the fitting you just need to push the release liner by the clip and at the same time pull the pipe.

### ADVANTAGES:

- SAVING OF TIME DURING THE INSTALLATION AS FAR AS 90%
- SUITABLE FOR SANITARY AND HEATING PLANTS
- NO NEED OF SPECIAL OR EXPENSIVE TOOLS FOR THE INSTALLATION
- THE CONNECTION IS REVERSIBLE

### USE OF THE FITTINGS WITH COPPER, PEX AND POLYBUTYLENE PIPE





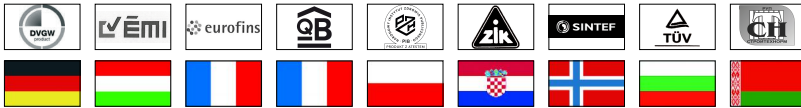
# ITAP-FIT<sup>®</sup> FITTINGS

## 630 Equal T coupling



MEASURE	CODE	PACKING
12x12x12	630C000012	8/112
14x14x14	630C000014	6/84
15x15x15	630C000015	6/84
16x16x16	630C000016	6/84
18x18x18	630C000018	6/54
20x20x20	630C000020	5/45
22x22x22	630C000022	5/45
25x25x25	630C000025	5/35
28x28x28	630C000028	4/24

### CERTIFICATIONS



### TECHNICAL SPECIFICATIONS

Bodies in de-zincification resistant brass (DZR).

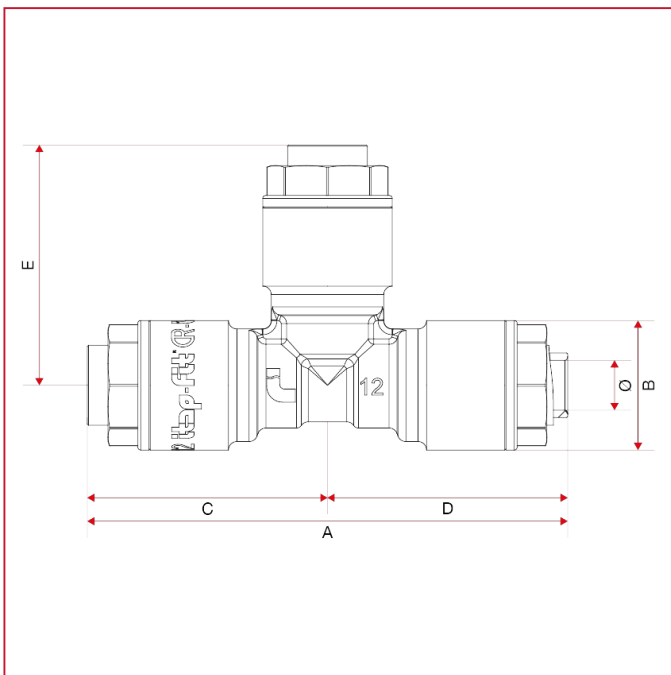
Minimum and maximum working temperatures: -20°C, 120°C (allowed peaks of 150°C).

Nominal pressure:

Copper pipe: 20bar at 25°C, 10bar at 90°C.

PEX and polybutylene pipes: 12bar at 25°C, 5 bar at 90°C.

### OVERALL DIMENSIONS

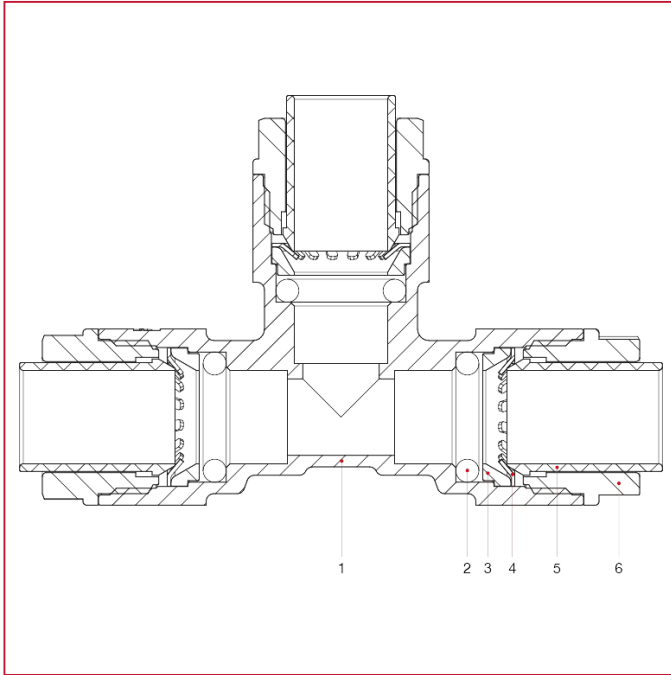




# ITAP-FIT® FITTINGS

	12x12x12	14x14x14	15x15x15	16x16x16	18x18x18	20x20x20	22x22x22	25x25x25	28x28x28
A	85,4	87,2	88	89	99,2	109,2	108	117,2	120
B	23	25	26	27	31,5	34	36	40	43,7
C	42,7	43,6	44	44,5	49,6	54,6	54	58,6	60
D	42,7	43,6	44	44,5	49,6	54,6	54	58,6	60
E	42,7	43,6	44	44,5	49,6	54,6	54	58,6	60

## MATERIALS



POS.	DESCRIPTION	N.	MATERIAL
1	Body	1	Brass CW625N
2	O-ring	3	EPDM
3	Spacer	3	NIRETAN A EXL SC
4	Fastening ring	3	Stainless steel AISI 301
5	Release collar	3	GRIVORY GV-5H
6	End adapter	3	GRIVORY GV-5H



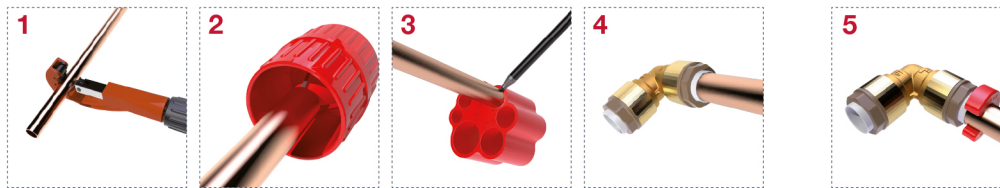
# ITAP-FIT<sup>®</sup> FITTINGS

## INSTRUCTIONS



### FOUR SIMPLE STEPS FOR A SAFE INSTALLATION

1. Cut the pipe by a rotary pipe cutter.
  2. Deburr the external surface of the pipe.
  3. Insert the pipe in the depth gauge and mark the pipe.
  4. Insert the pipe by pushing it as far as it reaches the blocking point, that should correspond to the mark made before.
- If you are using cross-linked polyethylene pipes (PEX) or polybutylene pipes you have to insert the liner before the connection.

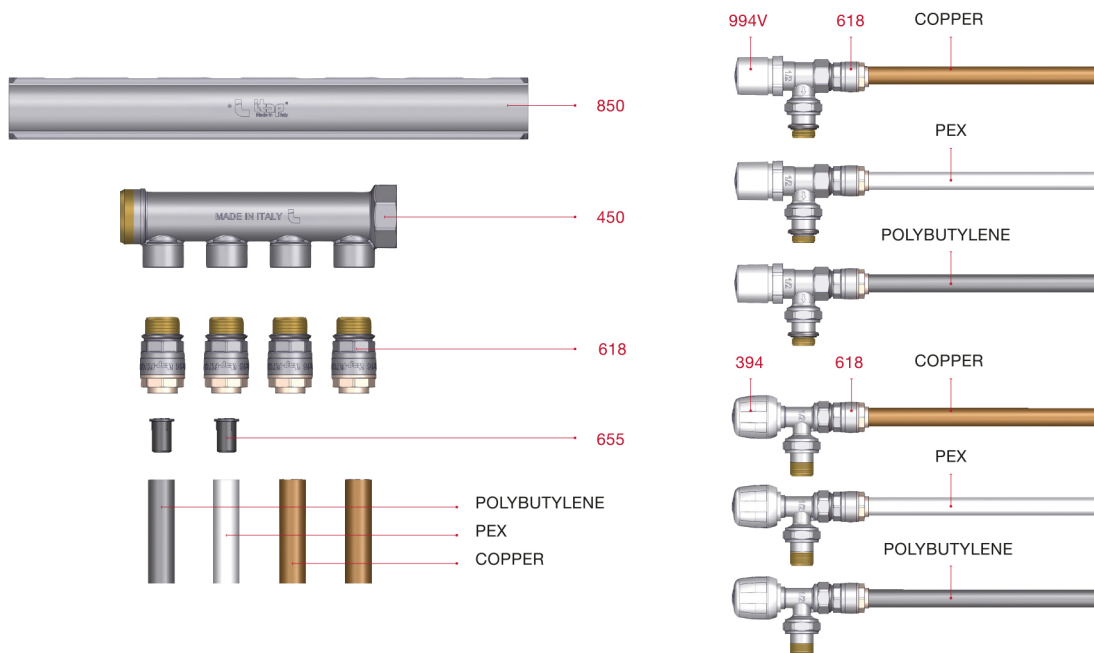


5. To disconnect the fitting you just need to push the release liner by the clip and at the same time pull the pipe.

### ADVANTAGES:

- SAVING OF TIME DURING THE INSTALLATION AS FAR AS 90%
- SUITABLE FOR SANITARY AND HEATING PLANTS
- NO NEED OF SPECIAL OR EXPENSIVE TOOLS FOR THE INSTALLATION
- THE CONNECTION IS REVERSIBLE

### USE OF THE FITTINGS WITH COPPER, PEX AND POLYBUTYLENE PIPE





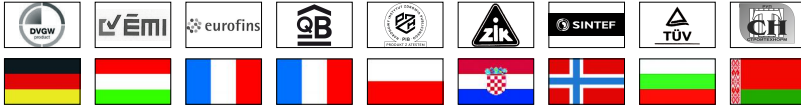
# ITAP-FIT® FITTINGS

## 635 Female branch T coupling



MEASURE	CODE	PACKING
14x1/2"	635B012014	6/84
15x1/2"	635B012015	6/84
16x1/2"	635B012016	6/84
18x1/2"	635B012018	6/72
18x3/4"	635B034018	6/72
20x1/2"	635B012020	8/72
22x3/4"	635B034022	6/54
25x3/4"	635B034025	6/54
28x1"	635B100028	4/24

### CERTIFICATIONS



### TECHNICAL SPECIFICATIONS

Bodies in de-zincification resistant brass (DZR).

Minimum and maximum working temperatures: -20°C, 120°C (allowed peaks of 150°C).

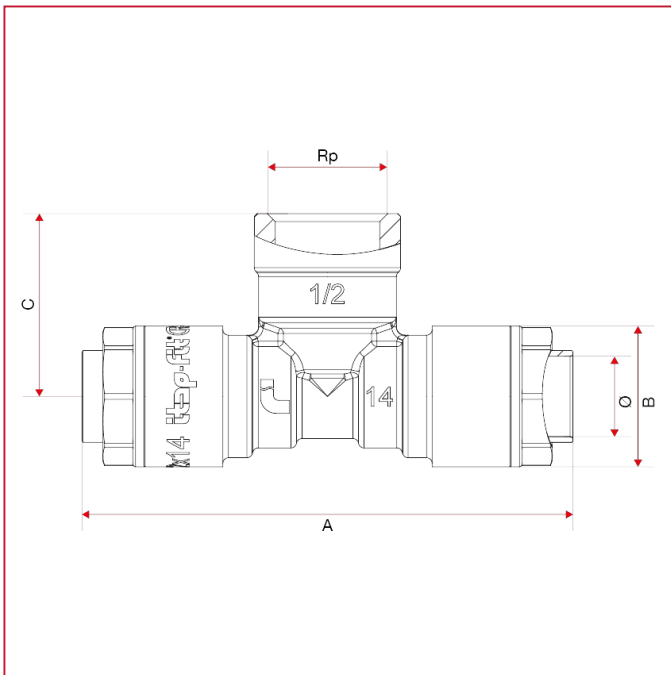
Nominal pressure:

Copper pipe: 20bar at 25°C, 10bar at 90°C.

PEX and polybutylene pipes: 12bar at 25°C, 5 bar at 90°C.

Threads: ISO 7/1 (equivalent to DIN EN 10226-1 and BS EN 10226-1).

### OVERALL DIMENSIONS

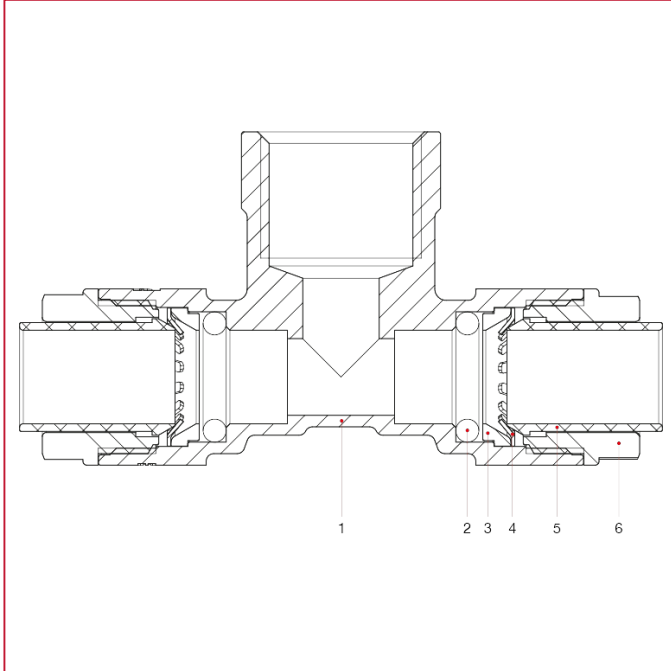




# ITAP-FIT<sup>®</sup> FITTINGS

	14x1/2"	15x1/2"	16x1/2"	18x1/2"	18x3/4"	20x1/2"	22x3/4"	25x3/4"	28x1"
A	87,2	88	89	99,2	99,2	109,2	108	117,2	120
B	25	26	27	31,5	31,5	34	36	40	43,7
C	32,5	33	33,5	34,5	37,3	35,5	40	41	47,2

## MATERIALS



POS.	DESCRIPTION	N.	MATERIAL
1	Body	1	Brass CW625N
2	O-ring	2	EPDM
3	Spacer	2	NIRETAN A EXL SC
4	Fastening ring	2	Stainless steel AISI 301
5	Release collar	2	GRIVORY GV-5H
6	End adapter	2	GRIVORY GV-5H



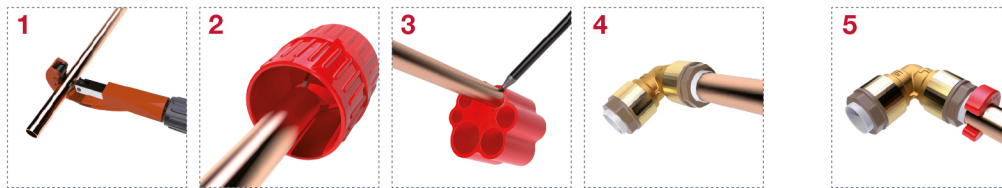
# ITAP-FIT<sup>®</sup> FITTINGS

## INSTRUCTIONS



### FOUR SIMPLE STEPS FOR A SAFE INSTALLATION

1. Cut the pipe by a rotary pipe cutter.
  2. Deburr the external surface of the pipe.
  3. Insert the pipe in the depth gauge and mark the pipe.
  4. Insert the pipe by pushing it as far as it reaches the blocking point, that should correspond to the mark made before.
- If you are using cross-linked polyethylene pipes (PEX) or polybutylene pipes you have to insert the liner before the connection.

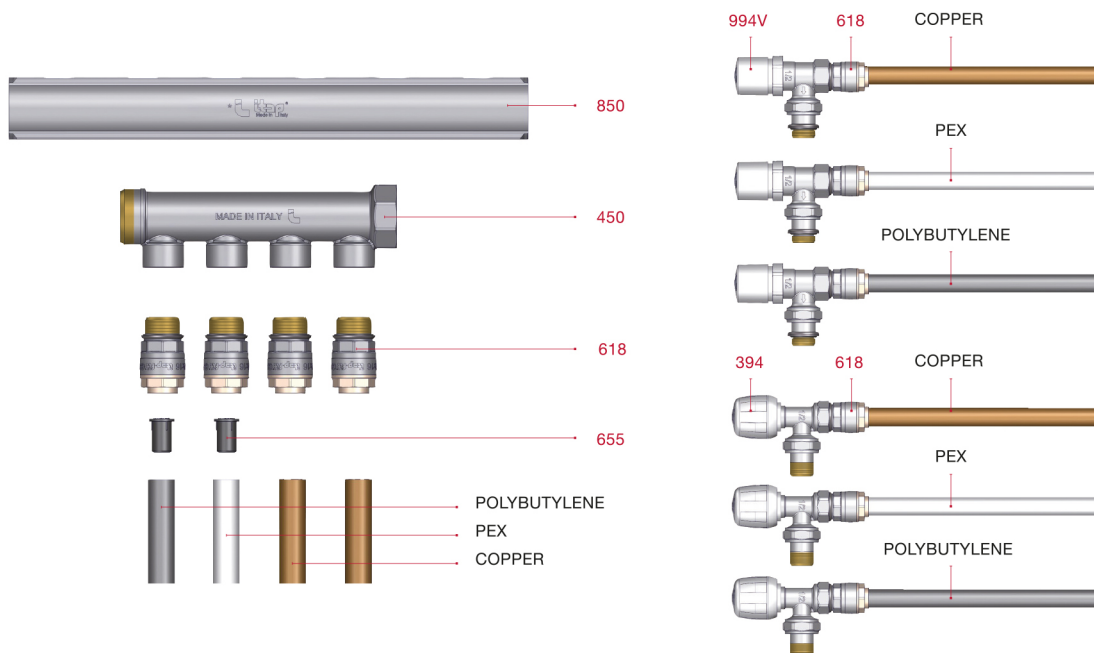


5. To disconnect the fitting you just need to push the release liner by the clip and at the same time pull the pipe.

### ADVANTAGES:

- SAVING OF TIME DURING THE INSTALLATION AS FAR AS 90%
- SUITABLE FOR SANITARY AND HEATING PLANTS
- NO NEED OF SPECIAL OR EXPENSIVE TOOLS FOR THE INSTALLATION
- THE CONNECTION IS REVERSIBLE

### USE OF THE FITTINGS WITH COPPER, PEX AND POLYBUTYLENE PIPE





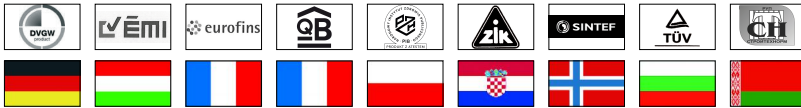
# ITAP-FIT® FITTINGS

## 640 Male elbow



MEASURE	CODE	PACKING
12x3/8"	640B038012	12/168
12x1/2"	640B012012	12/168
14x1/2"	640B012014	12/168
15x1/2"	640B012015	12/168
16x1/2"	640B012016	10/140
18x1/2"	640B012018	10/140
18x3/4"	640B034018	10/120
20x1/2"	640B012020	10/120
22x3/4"	640B034022	8/96
25x3/4"	640B034025	8/72
28x1"	640B100028	6/54

### CERTIFICATIONS



### TECHNICAL SPECIFICATIONS

Bodies in de-zincification resistant brass (DZR).

Minimum and maximum working temperatures: -20°C, 120°C (allowed peaks of 150°C).

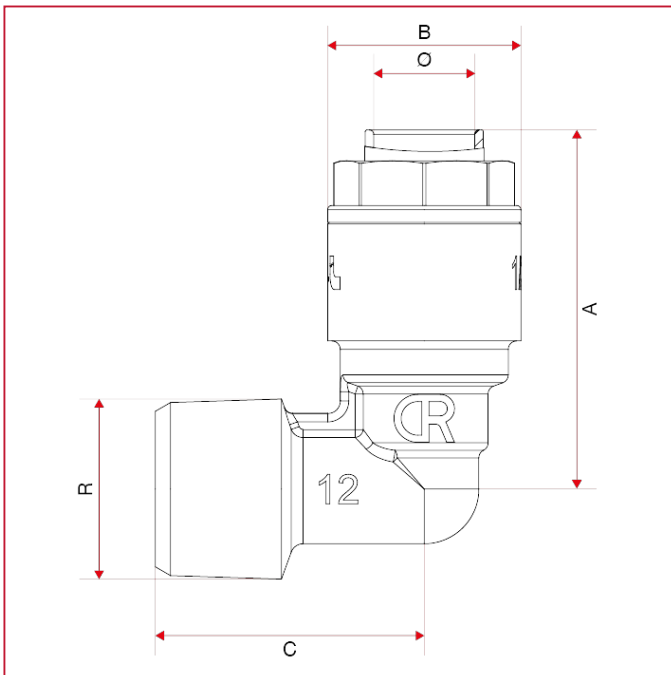
Nominal pressure:

Copper pipe: 20bar at 25°C, 10bar at 90°C.

PEX and polybutylene pipes: 12bar at 25°C, 5 bar at 90°C.

Threads: ISO 7/1 (equivalent to DIN EN 10226-1 and BS EN 10226-1).

### OVERALL DIMENSIONS

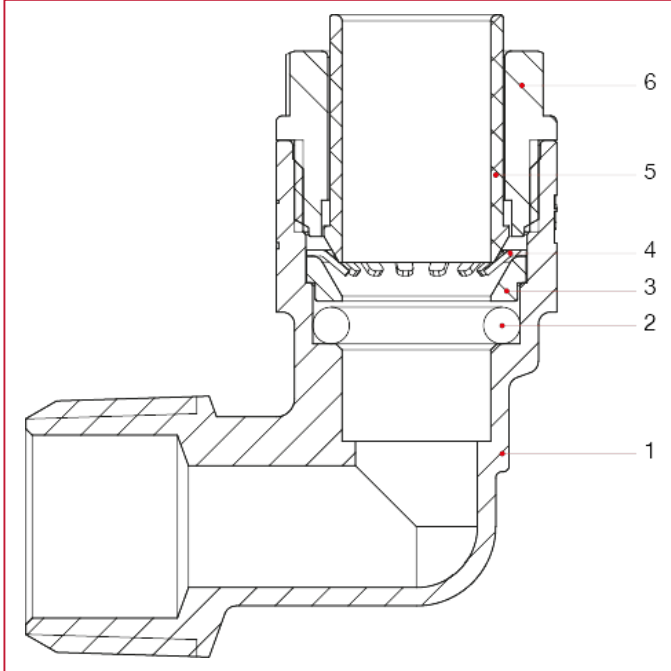




# ITAP-FIT<sup>®</sup> FITTINGS

	12x3/8"	12x1/2"	14x1/2"	15x1/2"	16x1/2"	18x1/2"	18x3/4"	20x1/2"	22x3/4"	25x3/4"	28x1"
A	42,7	42,7	43,6	43,9	44,5	49,6	49,6	54,6	53,9	58,6	59,9
B	23	23	25	26	27	31,5	31,5	34	36	40	43,7
C	28	32	32,5	33	33,5	34,5	37,3	35,5	40	41,1	45,9

## MATERIALS



POS.	DESCRIPTION	N.	MATERIAL
1	Body	1	Brass CW625N
2	O-ring	1	EPDM
3	Spacer	1	NIRETAN A EXL SC
4	Fastening ring	1	Stainless steel AISI 301
5	Release collar	1	GRIVORY GV-5H
6	End adapter	1	GRIVORY GV-5H



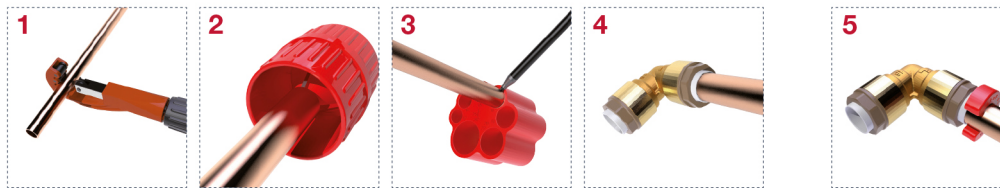
# ITAP-FIT<sup>®</sup> FITTINGS

## INSTRUCTIONS



### FOUR SIMPLE STEPS FOR A SAFE INSTALLATION

1. Cut the pipe by a rotary pipe cutter.
  2. Deburr the external surface of the pipe.
  3. Insert the pipe in the depth gauge and mark the pipe.
  4. Insert the pipe by pushing it as far as it reaches the blocking point, that should correspond to the mark made before.
- If you are using cross-linked polyethylene pipes (PEX) or polybutylene pipes you have to insert the liner before the connection.

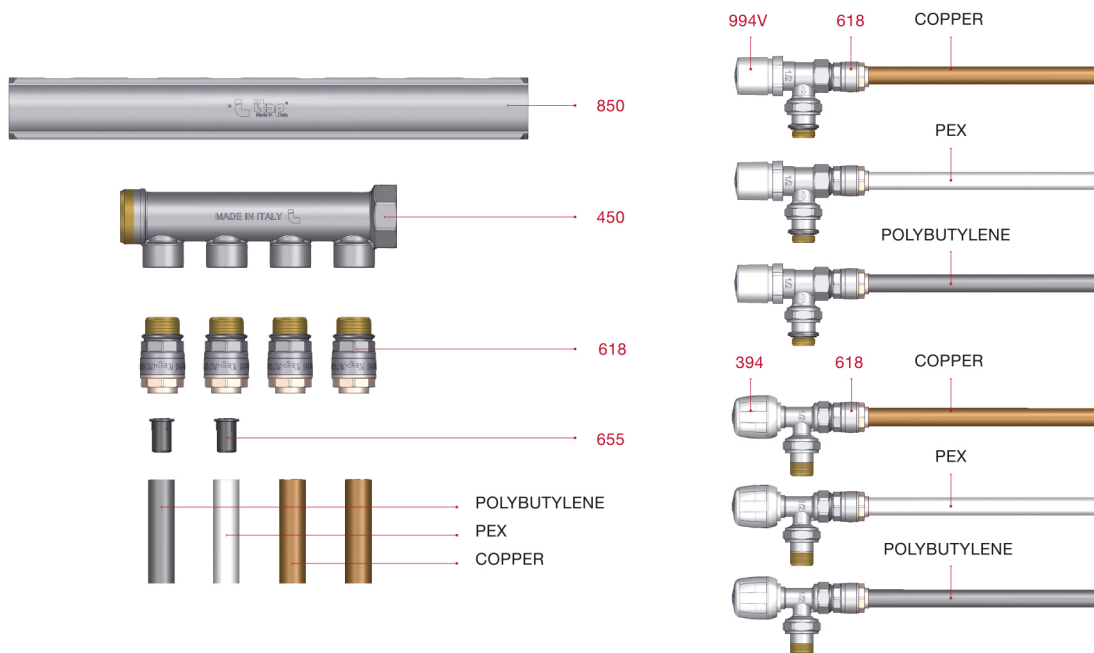


5. To disconnect the fitting you just need to push the release liner by the clip and at the same time pull the pipe.

### ADVANTAGES:

- SAVING OF TIME DURING THE INSTALLATION AS FAR AS 90%
- SUITABLE FOR SANITARY AND HEATING PLANTS
- NO NEED OF SPECIAL OR EXPENSIVE TOOLS FOR THE INSTALLATION
- THE CONNECTION IS REVERSIBLE

### USE OF THE FITTINGS WITH COPPER, PEX AND POLYBUTYLENE PIPE





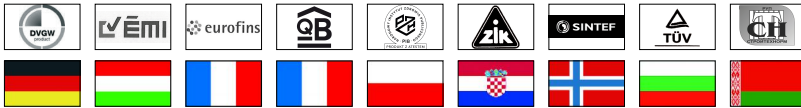
# ITAP-FIT® FITTINGS

## 645 Female elbow



MEASURE	CODE	PACKING
12x3/8"	645B038012	12/168
12x1/2"	645B012012	12/168
14x1/2"	645B012014	12/168
15x1/2"	645B012015	12/168
16x1/2"	645B012016	10/140
18x1/2"	645B012018	10/120
18x3/4"	645B034018	10/120
20x1/2"	645B012020	10/120
22x3/4"	645B034022	8/96
25x3/4"	645B034025	8/72
28x1"	645B100028	6/54

### CERTIFICATIONS



### TECHNICAL SPECIFICATIONS

Bodies in de-zincification resistant brass (DZR).

Minimum and maximum working temperatures: -20°C, 120°C (allowed peaks of 150°C).

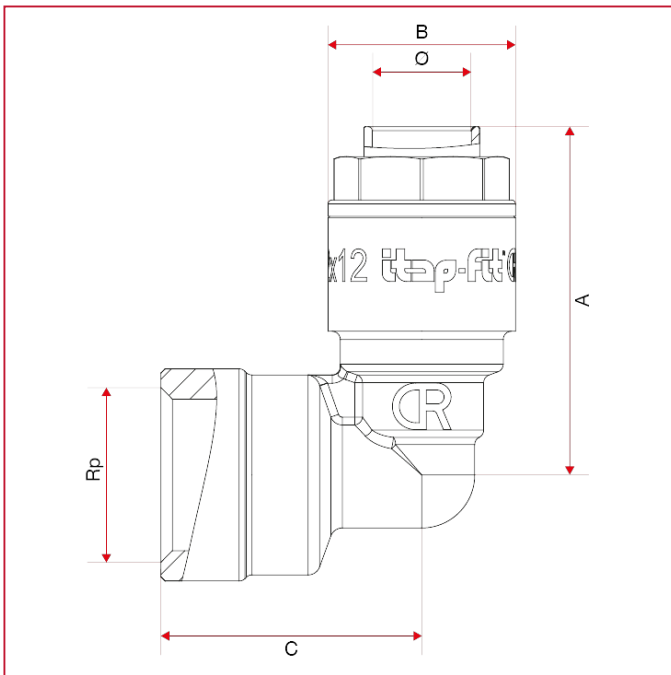
Nominal pressure:

Copper pipe: 20bar at 25°C, 10bar at 90°C.

PEX and polybutylene pipes: 12bar at 25°C, 5 bar at 90°C.

Threads: ISO 7/1 (equivalent to DIN EN 10226-1 and BS EN 10226-1).

### OVERALL DIMENSIONS

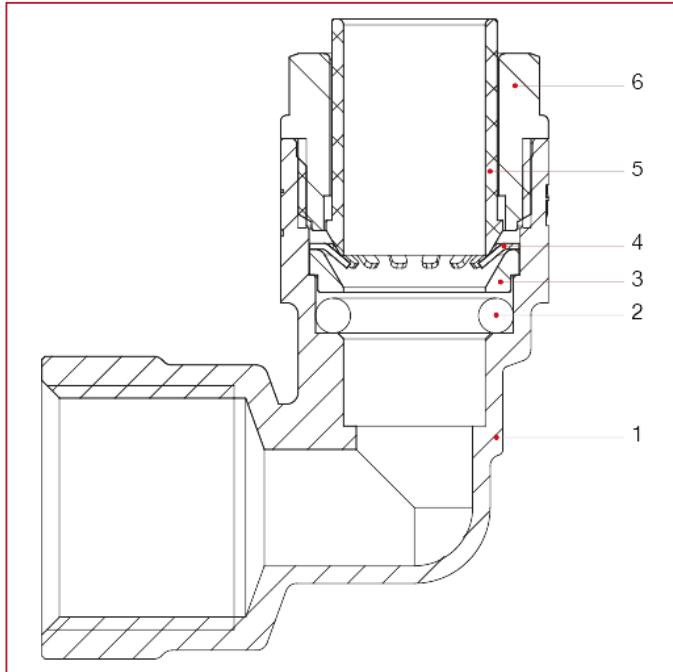




# ITAP-FIT<sup>®</sup> FITTINGS

	12x3/8"	12x1/2"	14x1/2"	15x1/2"	16x1/2"	18x1/2"	18x3/4"	20x1/2"	22x3/4"	25x3/4"	28x1"
A	42,7	42,7	43,6	43,9	44,5	49,6	49,6	54,6	53,9	58,6	59,9
B	23	23	25	26	27	31,5	31,5	34	36	40	43,7
C	28,5	32	32,6	33	33,5	34,5	37,3	35,5	40	41,4	47,2

## MATERIALS



POS.	DESCRIPTION	N.	MATERIAL
1	Body	1	Brass CW625N
2	O-ring	1	EPDM
3	Spacer	1	NIRETAN A EXL SC
4	Fastening ring	1	Stainless steel AISI 301
5	Release collar	1	GRIVORY GV-5H
6	End adapter	1	GRIVORY GV-5H



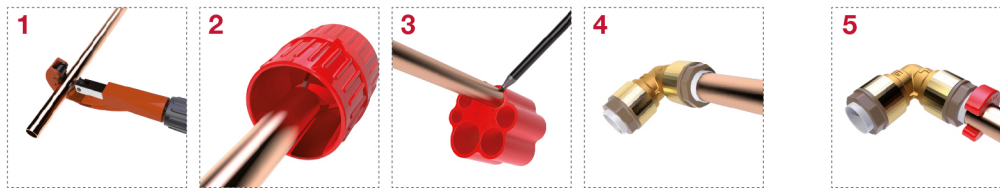
# ITAP-FIT<sup>®</sup> FITTINGS

## INSTRUCTIONS



### FOUR SIMPLE STEPS FOR A SAFE INSTALLATION

1. Cut the pipe by a rotary pipe cutter.
  2. Deburr the external surface of the pipe.
  3. Insert the pipe in the depth gauge and mark the pipe.
  4. Insert the pipe by pushing it as far as it reaches the blocking point, that should correspond to the mark made before.
- If you are using cross-linked polyethylene pipes (PEX) or polybutylene pipes you have to insert the liner before the connection.

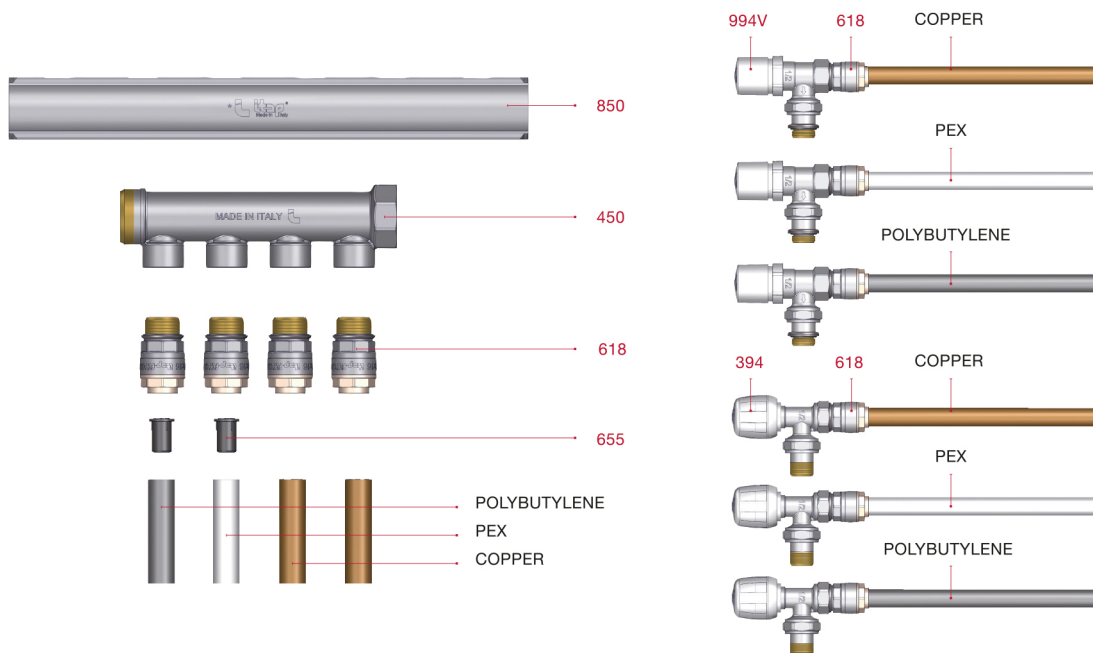


5. To disconnect the fitting you just need to push the release liner by the clip and at the same time pull the pipe.

### ADVANTAGES:

- SAVING OF TIME DURING THE INSTALLATION AS FAR AS 90%
- SUITABLE FOR SANITARY AND HEATING PLANTS
- NO NEED OF SPECIAL OR EXPENSIVE TOOLS FOR THE INSTALLATION
- THE CONNECTION IS REVERSIBLE

### USE OF THE FITTINGS WITH COPPER, PEX AND POLYBUTYLENE PIPE





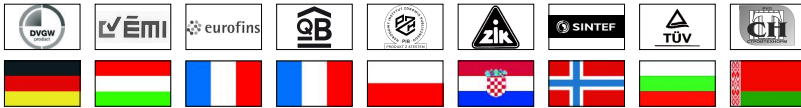
# ITAP-FIT<sup>®</sup> FITTINGS

## 648 Backplate female elbow



MEASURE	CODE	PACKING
14x1/2"	648B012014	6/84
15x1/2"	648B012015	6/84
16x1/2"	648B012016	6/84

### CERTIFICATIONS



### TECHNICAL SPECIFICATIONS

Bodies in de-zincification resistant brass (DZR).

Minimum and maximum working temperatures: -20°C, 120°C (allowed peaks of 150°C).

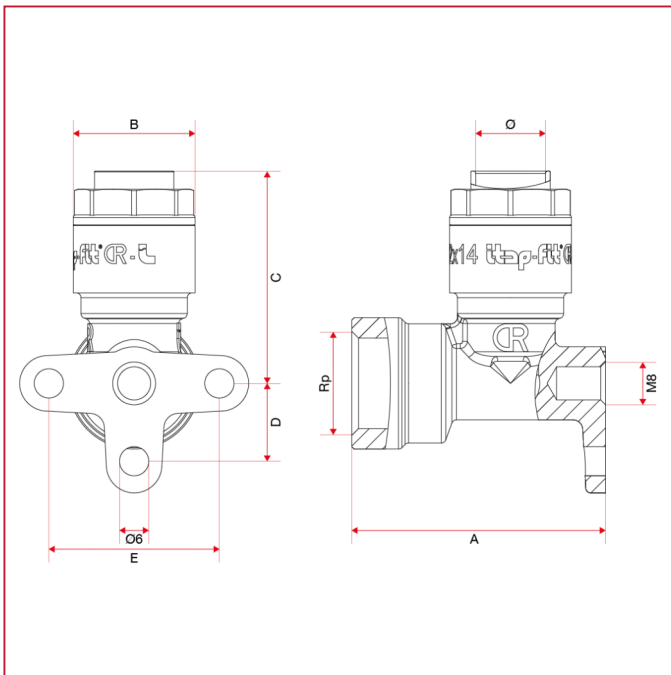
Nominal pressure:

Copper pipe: 20bar at 25°C, 10bar at 90°C.

PEX and polybutylene pipes: 12bar at 25°C, 5 bar at 90°C.

Threads: ISO 7/1 (equivalent to DIN EN 10226-1 and BS EN 10226-1).

### OVERALL DIMENSIONS

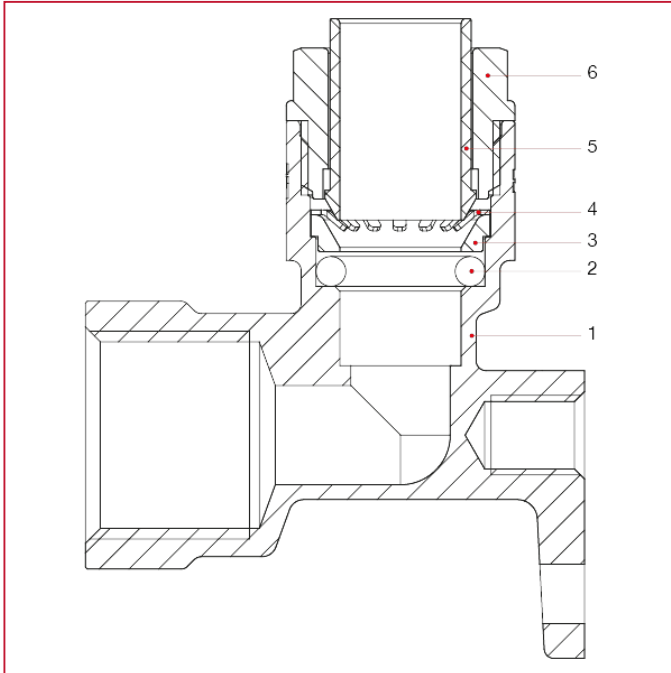




# ITAP-FIT<sup>®</sup> FITTINGS

	14x1/2"	15x1/2"	16x1/2"
A	52,1	53	54
B	25	26	27
C	43,6	43,9	44,6
D	16	16	16
E	35	35	35

## MATERIALS



POS.	DESCRIPTION	N.	MATERIAL
1	Body	1	Brass CW625N
2	O-ring	1	EPDM
3	Spacer	1	NIRETAN A EXL SC
4	Fastening ring	1	Stainless steel AISI 301
5	Release collar	1	GRIVORY GV-5H
6	End adapter	1	GRIVORY GV-5H



# ITAP-FIT<sup>®</sup> FITTINGS

## INSTRUCTIONS



### FOUR SIMPLE STEPS FOR A SAFE INSTALLATION

1. Cut the pipe by a rotary pipe cutter.
  2. Deburr the external surface of the pipe.
  3. Insert the pipe in the depth gauge and mark the pipe.
  4. Insert the pipe by pushing it as far as it reaches the blocking point, that should correspond to the mark made before.
- If you are using cross-linked polyethylene pipes (PEX) or polybutylene pipes you have to insert the liner before the connection.

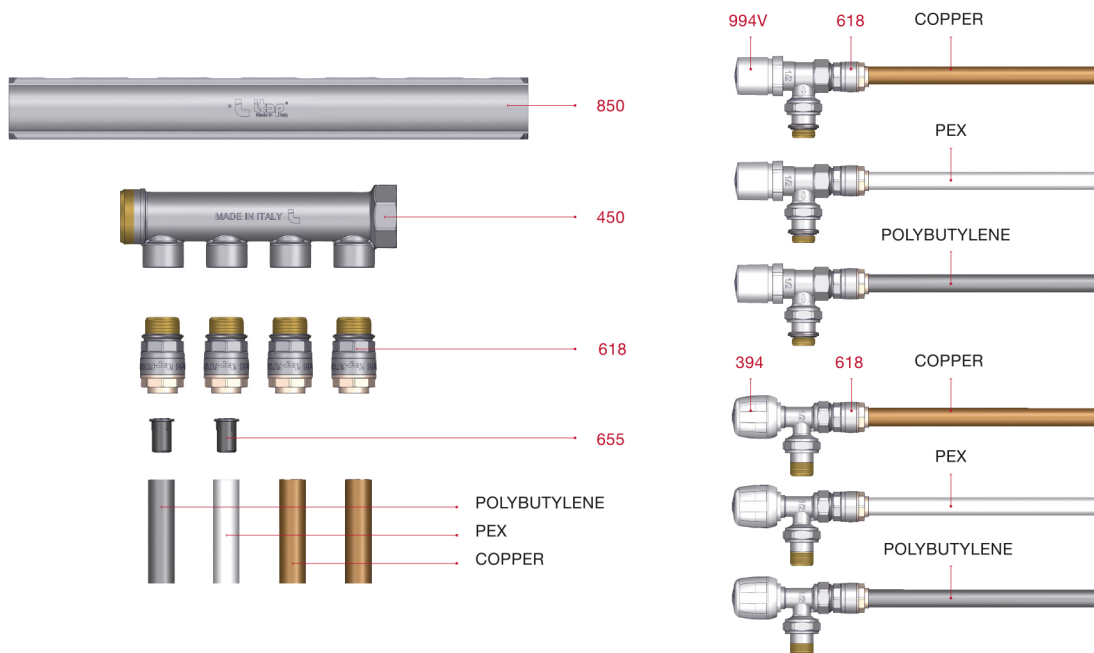


5. To disconnect the fitting you just need to push the release liner by the clip and at the same time pull the pipe.

### ADVANTAGES:

- SAVING OF TIME DURING THE INSTALLATION AS FAR AS 90%
- SUITABLE FOR SANITARY AND HEATING PLANTS
- NO NEED OF SPECIAL OR EXPENSIVE TOOLS FOR THE INSTALLATION
- THE CONNECTION IS REVERSIBLE

### USE OF THE FITTINGS WITH COPPER, PEX AND POLYBUTYLENE PIPE





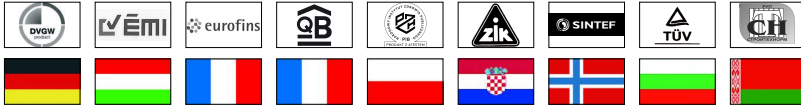
# ITAP-FIT® FITTINGS

## 650 Elbow coupling



MEASURE	CODE	PACKING
12	650C000012	12/168
14	650C000014	10/140
15	650C000015	10/140
16	650C000016	10/140
18	650C000018	10/120
20	650C000020	8/72
22	650C000022	8/72
25	650C000025	6/72
28	650C000028	5/60

### CERTIFICATIONS



### TECHNICAL SPECIFICATIONS

Bodies in de-zincification resistant brass (DZR).

Minimum and maximum working temperatures: -20°C, 120°C (allowed peaks of 150°C).

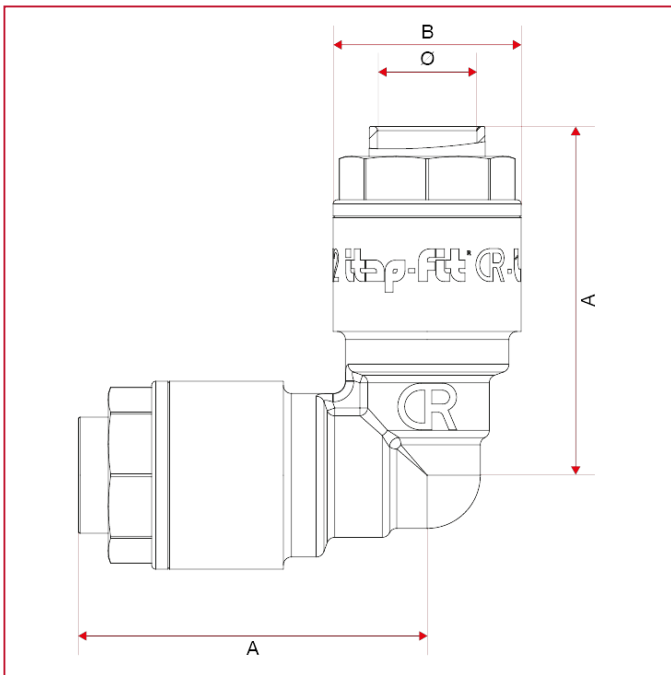
Nominal pressure:

Copper pipe: 20bar at 25°C, 10bar at 90°C.

PEX and polybutylene pipes: 12bar at 25°C, 5 bar at 90°C.

Threads: ISO 7/1 (equivalent to DIN EN 10226-1 and BS EN 10226-1).

### OVERALL DIMENSIONS

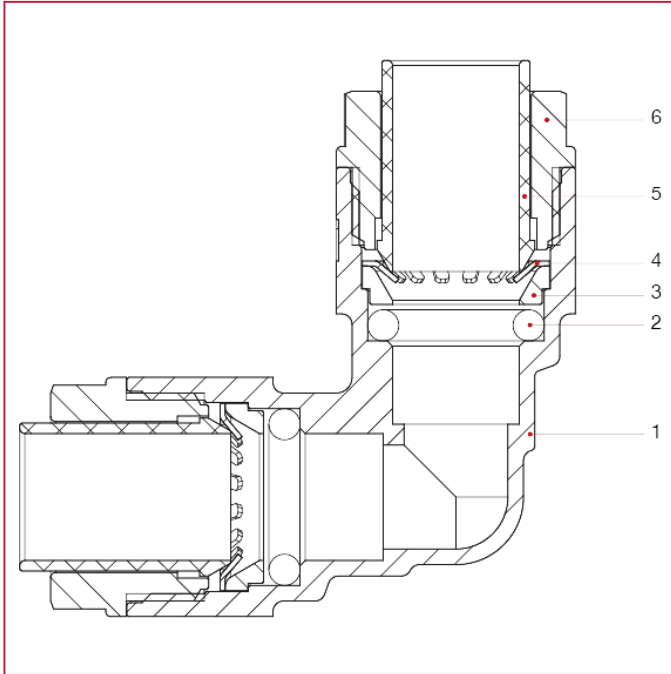




# ITAP-FIT<sup>®</sup> FITTINGS

	12	14	15	16	18	20	22	25	28
A	42,7	43,6	43,9	44,5	49,6	54,6	53,9	58,5	59,9
B	23	25	26	27	31,5	34	36	40	43,7

## MATERIALS



POS.	DESCRIPTION	N.	MATERIAL
1	Body	1	Brass CW625N
2	O-ring	2	EPDM
3	Spacer	2	NIRETAN A EXL SC
4	Fastening ring	2	Stainless steel AISI 301
5	Release collar	2	GRIVORY GV-5H
6	End adapter	2	GRIVORY GV-5H



# ITAP-FIT<sup>®</sup> FITTINGS

## INSTRUCTIONS



### FOUR SIMPLE STEPS FOR A SAFE INSTALLATION

1. Cut the pipe by a rotary pipe cutter.
  2. Deburr the external surface of the pipe.
  3. Insert the pipe in the depth gauge and mark the pipe.
  4. Insert the pipe by pushing it as far as it reaches the blocking point, that should correspond to the mark made before.
- If you are using cross-linked polyethylene pipes (PEX) or polybutylene pipes you have to insert the liner before the connection.

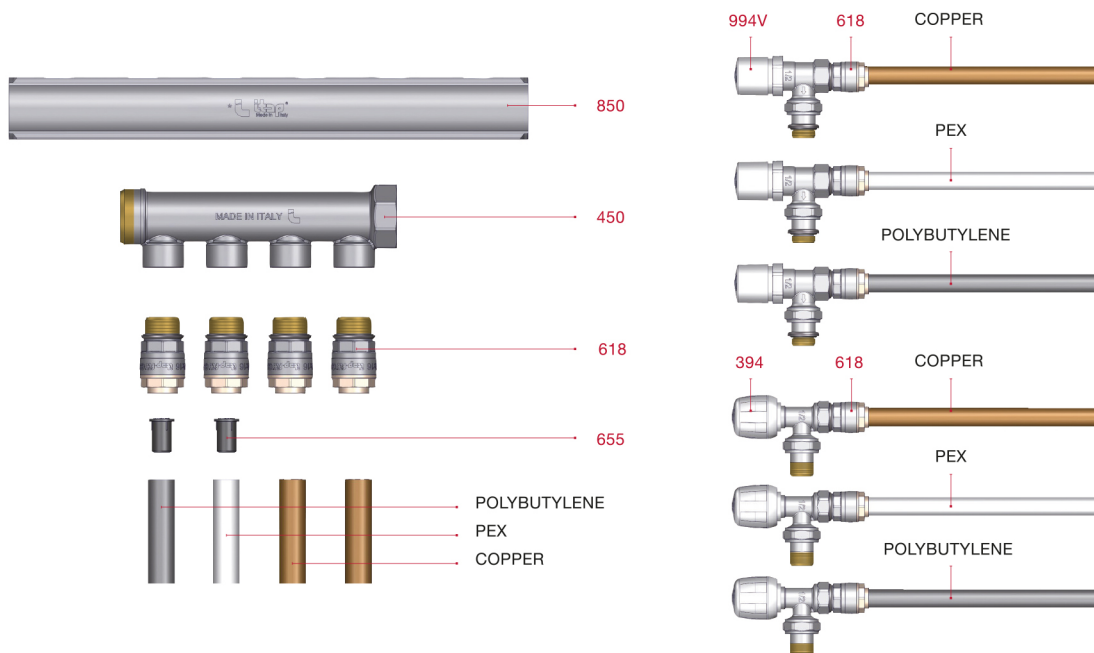


5. To disconnect the fitting you just need to push the release liner by the clip and at the same time pull the pipe.

### ADVANTAGES:

- SAVING OF TIME DURING THE INSTALLATION AS FAR AS 90%
- SUITABLE FOR SANITARY AND HEATING PLANTS
- NO NEED OF SPECIAL OR EXPENSIVE TOOLS FOR THE INSTALLATION
- THE CONNECTION IS REVERSIBLE

### USE OF THE FITTINGS WITH COPPER, PEX AND POLYBUTYLENE PIPE





## ITAP-FIT<sup>®</sup> FITTINGS

### 618 Nickel-plated straight male connector with an o-ring



MEASURE	CODE	PACKING
12x1/2"	6180012012	18/252
14x1/2"	6180012014	18/252
16x1/2"	6180012016	15/210

#### CERTIFICATIONS



#### TECHNICAL SPECIFICATIONS

Designed to be used with Itap radiator valves, either manual or thermostatic, with a female thread, and with simple manifolds, with female outlets.

Of course, it may be used with any radiator valve or manifold, as long as they are equipped with 1/2" female connections.

Body in nickel-plated brass.

O-ring in EPDM.

Minimum and maximum working temperatures: -20°C, 120°C (allowed peaks of 150°C).

Nominal pressure: Copper pipe: 20bar at 25°C, 10bar at 90°C.

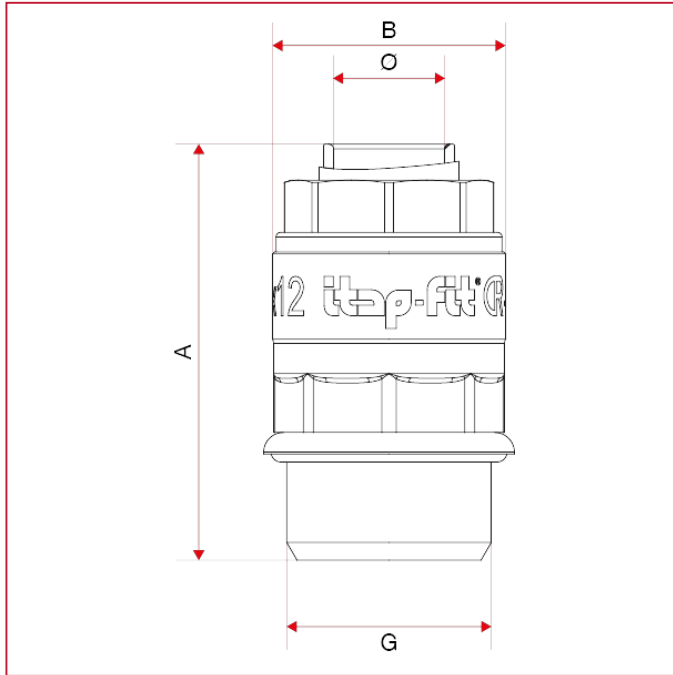
PEX and polybutylene pipes: 12bar at 25°C, 5 bar at 90°C.

Threads: ISO 228 (equivalent to DIN EN ISO 228 and BS EN ISO 228).



# ITAP-FIT<sup>®</sup> FITTINGS

## OVERALL DIMENSIONS

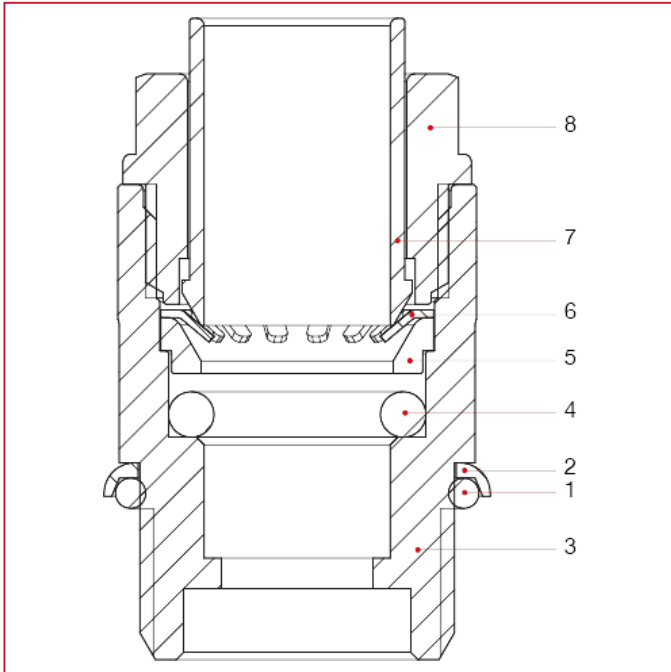


	12x1/2"	14x1/2"	16x1/2"
A	42,4	43,4	45,5
B	23,7	25	27



# ITAP-FIT<sup>®</sup> FITTINGS

## MATERIALS



POS.	DESCRIPTION	N.	MATERIAL
1	O-ring	1	EPDM
2	Ring	1	Fe
3	Body	1	Nickel-plated brass CW617N
4	O-ring	1	EPDM
5	Spacer	1	NIRETAN A EXL SC
6	Fastening ring	1	Stainless steel AISI 301
7	Release collar	1	GRIVORY GV-5H
8	End adapter	1	GRIVORY GV-5H



# ITAP-FIT<sup>®</sup> FITTINGS

## INSTRUCTIONS



### FOUR SIMPLE STEPS FOR A SAFE INSTALLATION

1. Cut the pipe by a rotary pipe cutter.
  2. Deburr the external surface of the pipe.
  3. Insert the pipe in the depth gauge and mark the pipe.
  4. Insert the pipe by pushing it as far as it reaches the blocking point, that should correspond to the mark made before.
- If you are using cross-linked polyethylene pipes (PEX) or polybutylene pipes you have to insert the liner before the connection.

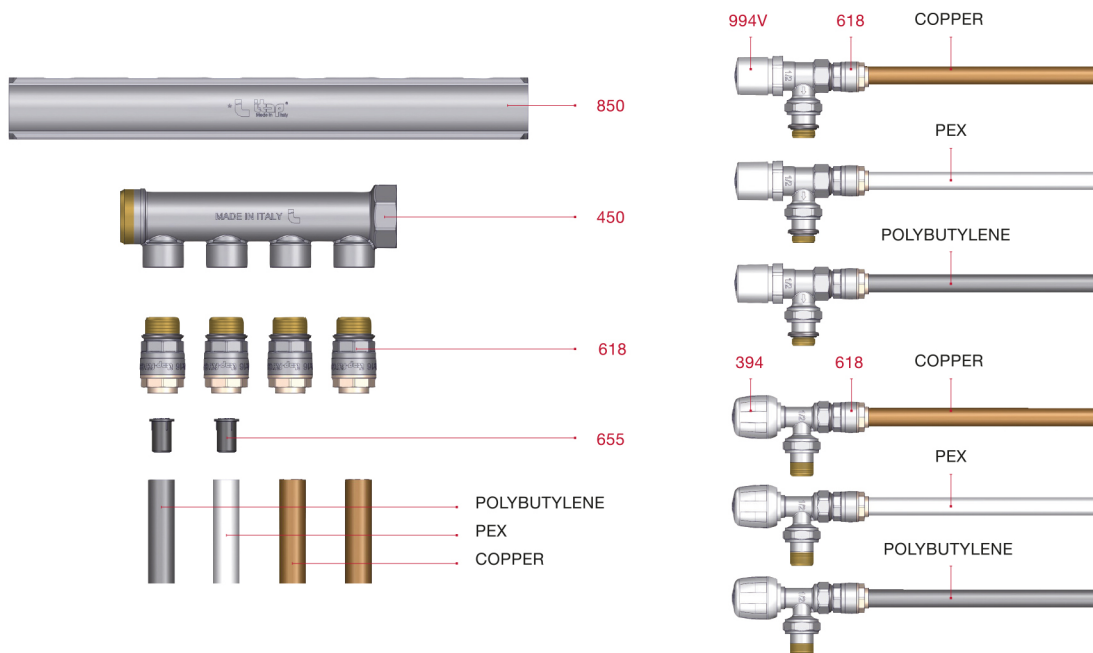


5. To disconnect the fitting you just need to push the release liner by the clip and at the same time pull the pipe.

### ADVANTAGES:

- SAVING OF TIME DURING THE INSTALLATION AS FAR AS 90%
- SUITABLE FOR SANITARY AND HEATING PLANTS
- NO NEED OF SPECIAL OR EXPENSIVE TOOLS FOR THE INSTALLATION
- THE CONNECTION IS REVERSIBLE

### USE OF THE FITTINGS WITH COPPER, PEX AND POLYBUTYLENE PIPE





# ITAP-FIT® FITTINGS

## 655 Liner



MEASURE	CODE	PACKING
12 x 1,1 14 x 2	655BU012110	50/1500
12 x 1,8	655BU012180	50/1500
15 x 1,8 16 x 2,2 16 x 2,3	655BU015180	50/1500
15 x 2,5	655BU015250	50/1500
16 x 1,5 17 x 2 18 x 2,5	655BU016150	50/1500
16 x 2	655BU016200	50/1500
20 x 1,9 20 x 2 22 x 3	655BU020190	40/1200
20 x 2,8	655BU020280	40/1200
22 x 2 22 x 2,1 25 x 3,5	655BU022200	40/1200

### CERTIFICATIONS



### TECHNICAL SPECIFICATIONS

The liner has to be inserted into cross-linked polyethylene or polybutylene pipes before the joint to Itap-Fit® fittings is made.

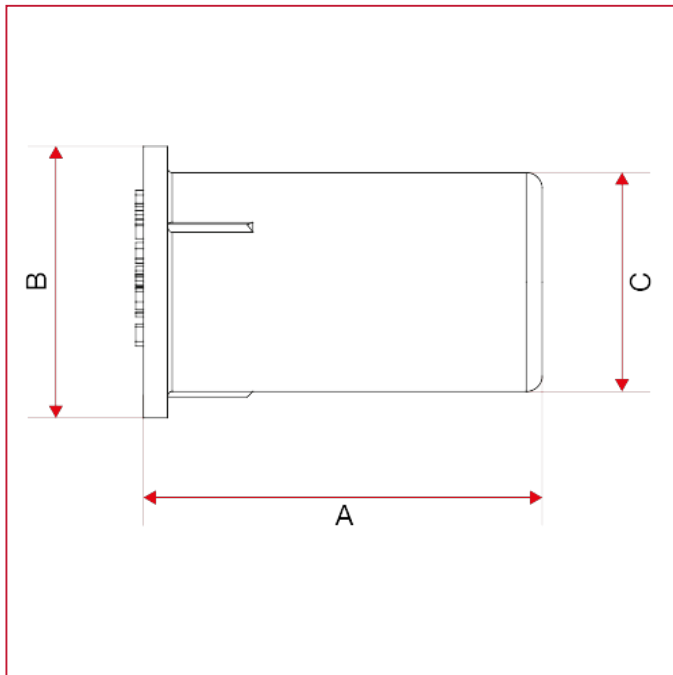
### COMPATIBILITY CHART OF THE LINER ART.655 TO CROSS-LINKED POLYETHYLENE (PEX) OR POLYBUTYLENE PIPES.

CODE	OUTSIDE DIAMETER X THICKNESS OF THE PIPE (mm)
655BU012110	12X1.1, 14X2
655BU012180	12X1.8
655BU015180	15X1.8, 16X2.2, 16X2.3
655BU015250	15X2.5
655BU016150	16X1.5, 17X2, 18X2.5
655BU016200	16X2
655BU020190	20X1.9, 20X2, 22X3
655BU020280	20X2.8
655BU022200	22X2, 22X2.1, 25X3.5



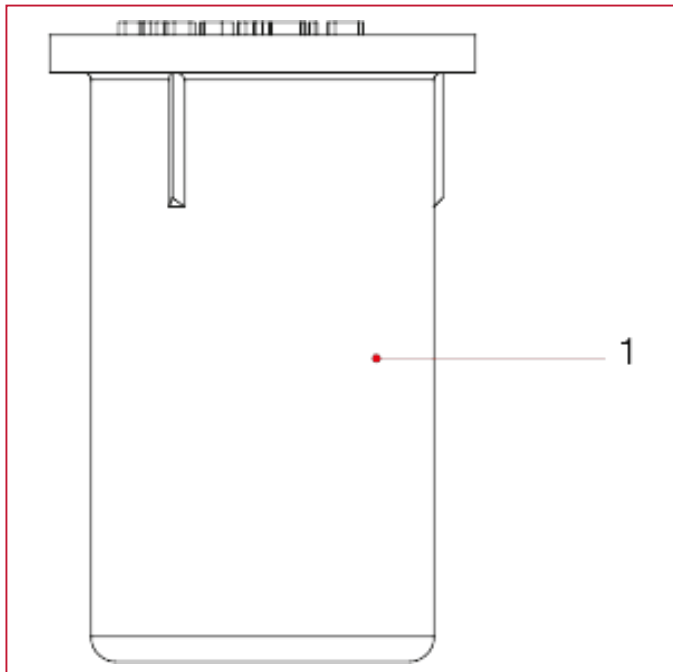
# ITAP-FIT<sup>®</sup> FITTINGS

## OVERALL DIMENSIONS



	12 x 1,1 14 x 2	12 x 1,8	15 x 1,8 16 x 2,2 16 x 2,3	15 x 2,5	16 x 1,5 17 x 2 18 x 2,5	16 x 2	20 x 1,9 20 x 2 22 x 3	20 x 2,8	22 x 2 22 x 2,1 25 x 3,5
A	20	20	20	20	25	20	25	25	29
B	12	11,5	14,5	14	16	15	18	18	21
C	9,5	8,2	11,3	9,5	12,8	11,8	15,6	14,2	17,5

## MATERIALS



POS.	DESCRIPTION	N.	MATERIAL
1	Liner	1	GRIVORY HT1V-5FWA



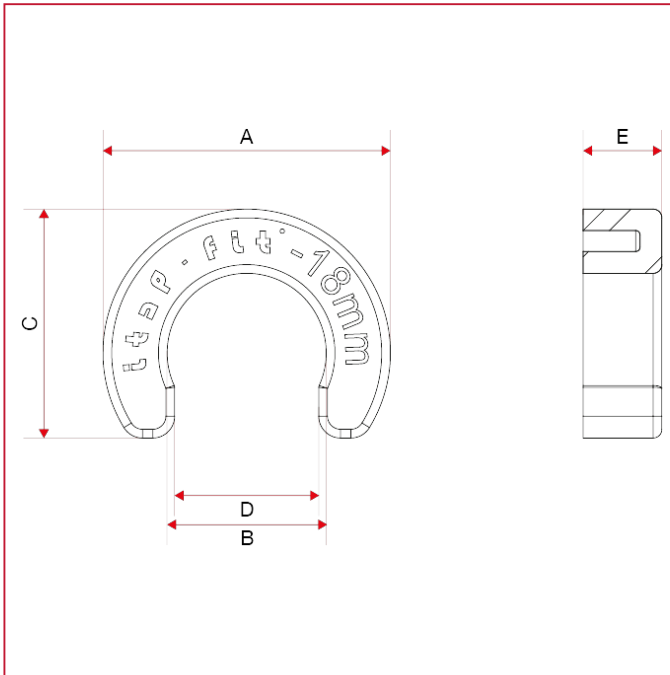
# ITAP-FIT® FITTINGS

## 671 Disconnecting clip



MEASURE	CODE	PACKING
12	671012	10/600
14	671014	10/600
15	671015	10/600
16	671016	10/600
18	671018	10/500
20	671020	10/500
22	671022	10/500
25	671025	10/400
28	671028	10/400

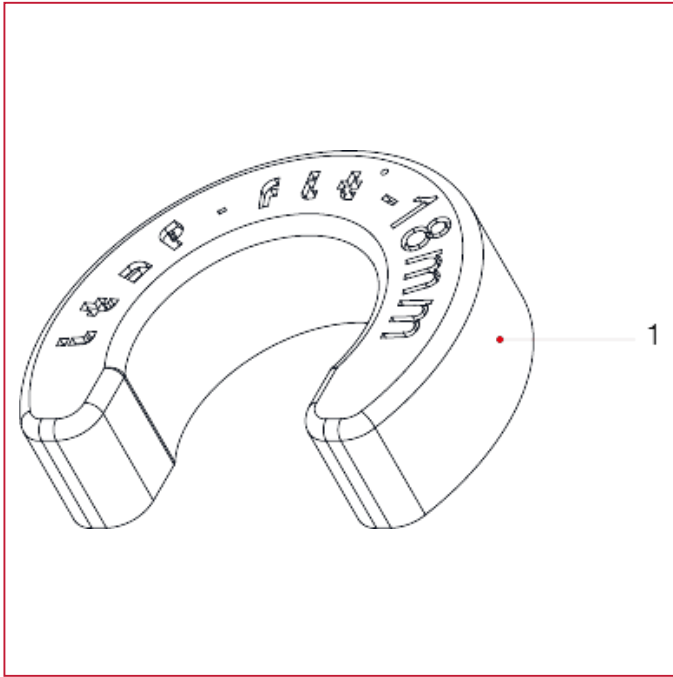
### OVERALL DIMENSIONS



	12	14	15	16	18	20	22	25	28
A	26,2	29	30	31	32,9	34	37,2	40	44
B	12,2	14,2	15,2	16,2	18,2	20,2	22,2	25,2	28,2
C	21	23	24	25,1	26,2	27,2	29,8	32,6	35,2
D	11	12,9	13,7	14,6	16,5	18,6	20,1	22,7	25,5
E	8,5	8,5	8,5	8,5	9	9,5	9,5	10	10



## MATERIALS



POS.	DESCRIPTION	N.	MATERIAL
1	Disconnetting clip	1	Nylon



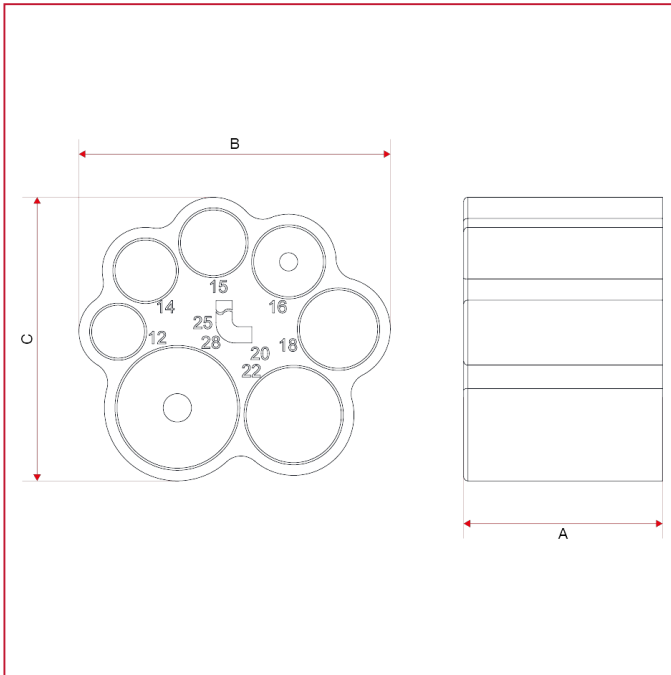
# ITAP-FIT® FITTINGS

## 685 Depth gauge



CODE	PACKING
685012028	1/50

### OVERALL DIMENSIONS

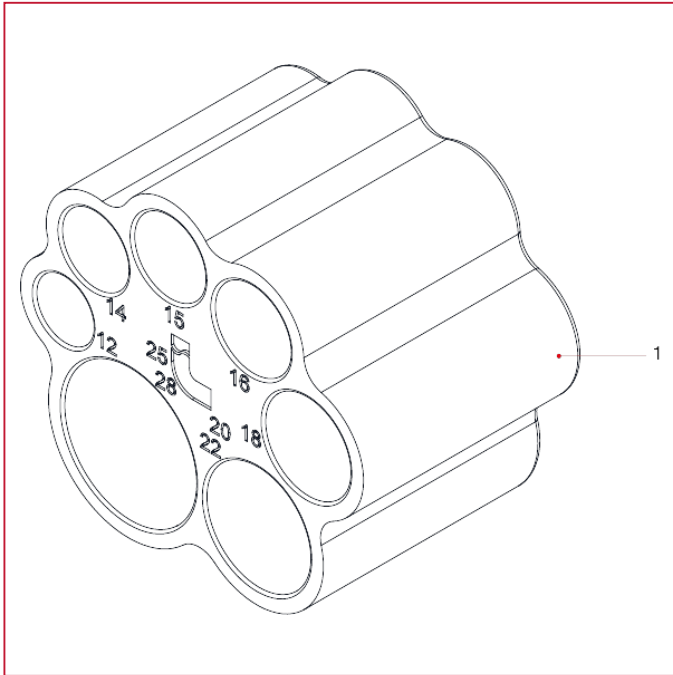


A	47
B	74
C	37



# ITAP-FIT<sup>®</sup> FITTINGS

## MATERIALS



POS.	DESCRIPTION	N.	MATERIAL
1	Depth gauge	1	ABS



# ITAP-FIT<sup>®</sup> FITTINGS

## 680 Pipe deburring tool

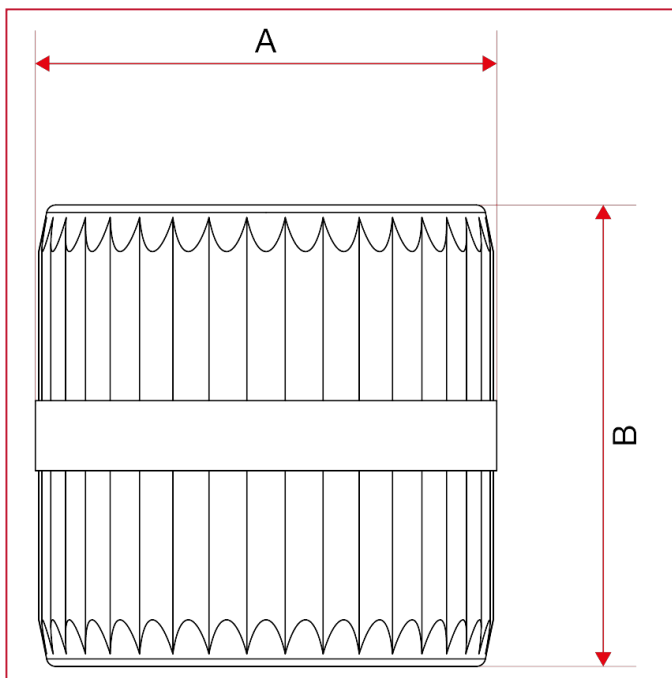


CODE	PACKING
680012028	1/80

### TECHNICAL SPECIFICATIONS

Suitable for pipes with diameter from 4mm to 36mm.  
Material: polymer.

### OVERALL DIMENSIONS

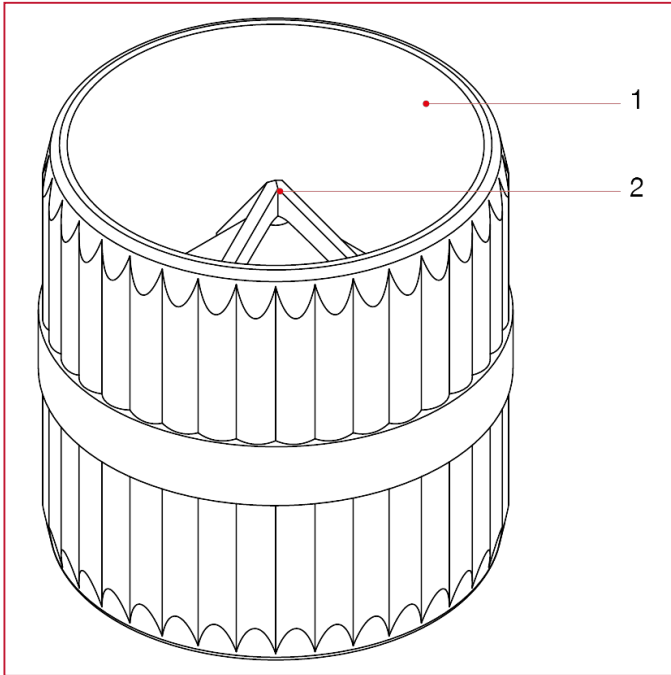


A	49,5
B	49,5



# ITAP-FIT<sup>®</sup> FITTINGS

## MATERIALS



POS.	DESCRIPTION	N.	MATERIAL
1	Pipe deburring tool	1	Polymer
2	Blades	1	Hardened steel



**ITAP S.p.A.**  
Via Ruca 19  
25065 Lumezzane  
Brescia (ITALY)  
Tel 030 8927011  
Fax 030 8921990  
[www.itap.it](http://www.itap.it) - [info@itap.it](mailto:info@itap.it)

We reserve the right to make improvements and changes to the products described herein and to the relative technical data, at any time and without forewarning.

rev. 20250402