

A715 – STAINLESS STEEL BALL VALVE



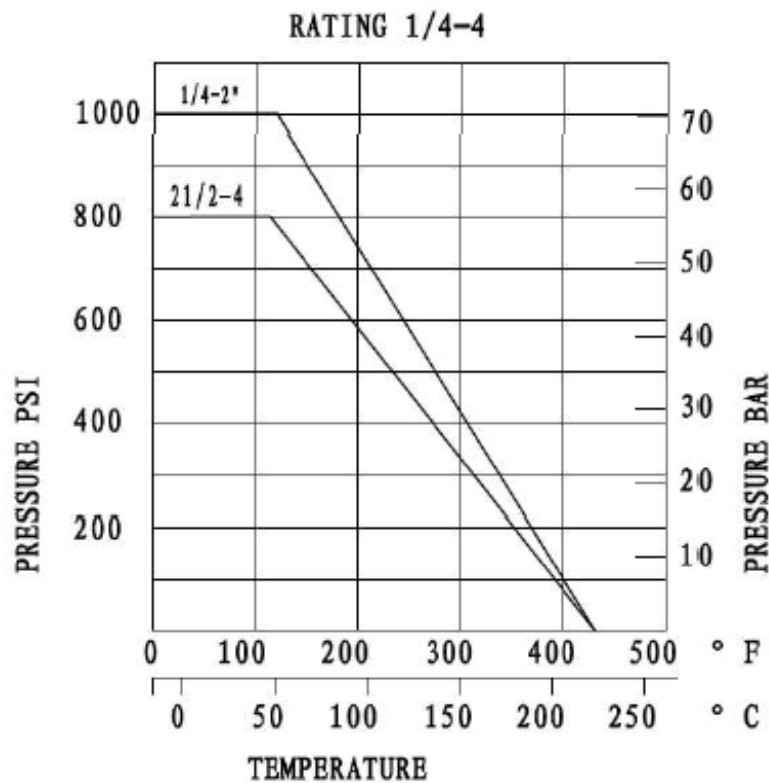
Properties

- BSP threaded connection
- Blow-out proof stem
- 1000WOG (63 bar) up to 3/4"
- Locking device
- 2 pc execution



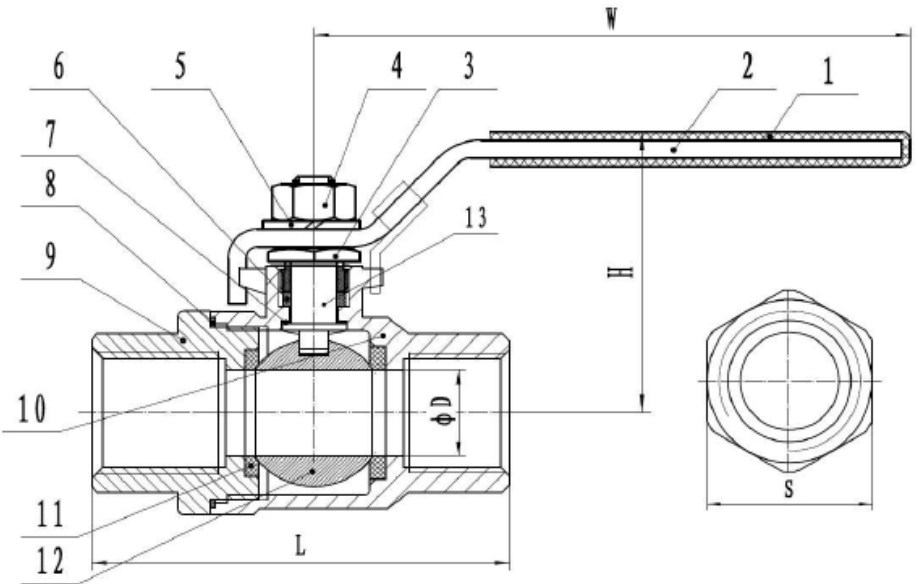
Application

Chemical and pharmaceutical industries, all medium suitable to the material quality of the product.



Materials and size

Item	Description	Materials
1	Plastic cover	Plastic
2	Handle	SS304
3	Gland nut	SS304
4	Stem nut	SS304
5	Spring washer	SS304
6	Stem packing	PTFE
7	Thrust washer	PTFE
8	Joint gasket	PTFE
9	Cap	CF8/CF8M
10	Body	CF8/CF8M
11	Ball seat	PTFE
12	Ball	CF8/CF8M
13	Stem	SS304/SS316



DN	ØD	L	H	W	S
1/4"	11,5	55	44	94	19
3/8"	12,5	60	44	94	21
1/2"	15	75	50	104	25,5
3/4"	20	80	59	113	31
1"	25	90	65	128	37,5
1-1/4"	32	110	79	156	46,5
1-1/2"	38	120	83	156	53,5
2"	50	140	99	194	66
2-1/2"	64	185	125	246	84
3"	76	205	130	246	99

Installation and maintenance

Before installation:

Pipe-line must be cleaned and free from any residuals of welding, shaving, and every kind of contaminations.

Pipe-line must be perfectly aligned and its support properly dimensioned, to avoid external constraint.

Please, use the right product according to the service conditions to seal the valve.

Use the right bolt tightening so the connections won't be damaged.

Cleaning and tests:

Keep the valves open during the cleaning process, to ensure there are no impurities between the ball and the body.

Pressure tests must be done with a cleaned pipe-line.

Open the valves partially for the tests. Pressure test must not exceed the valve specifications according to EN 12266-1.

Maintenance:

It's recommended to operate the valve twice (open and close) 1 or 2 times a year.

When you need to perform any intervention on the valve, make sure the pipe-line is not under pressure, there is no fluid in it and it's isolated.

The temperature must be low enough to operate without risks.

If there is a corrosive fluid, inert installation before intervention.

When the valve is under pressure and there's a leakage at the packing, tighten it slightly so that the leakage disappears.