



TECHNICAL CATALOGUE

# BUILD-IN VALVES AND SUPPLY STOPS

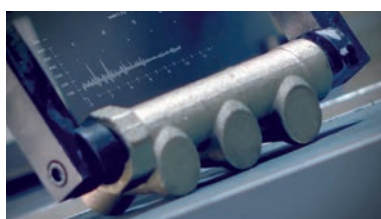


## > THE COMPANY

ITAP SpA, founded in Lumezzane (Brescia) in 1972, is currently one of the leading production companies in Italy of **valves, fittings and distribution manifolds** for plumbing and heating systems.

Thanks to a fully automated production process, with 85 transfer machines and 55 assembly lines, it is capable of producing 400,000 pieces per day.

Our innate pursuit for innovation and observance of technical regulations is supported by the company certification ISO 9001. The company has always considered its focus on quality as the main tool to obtain significant business results: today ITAP SpA is proud to offer products bearing the approval of numerous international certifying bodies.



➤ ITAP products have obtained approvals by more than 30 certification bodies from all over the world.





## BUILD-IN VALVES AND SUPPLY STOPS

### 340 Build-in valve with blind cap



MEASURE	PRESSURE	CODE	PACKING
1/2" (DN 15)	20bar/290psi	3400012	6/48
3/4" (DN 20)	15bar/217.5psi	3400034	6/30

#### CERTIFICATIONS



#### TECHNICAL SPECIFICATIONS

Female/female threads.

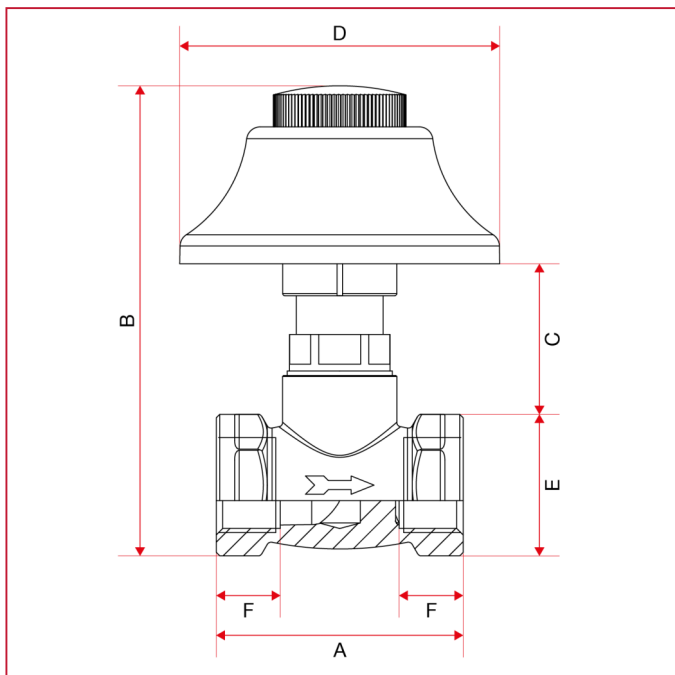
Body in brass.

Cover plate and cap in chrome-plated ABS.

Minimum and maximum working temperatures: 0°C, 110°C in absence of steam.

Threads: ISO 228 (equivalent to DIN EN ISO 228 and BS EN ISO 228).

#### OVERALL DIMENSIONS

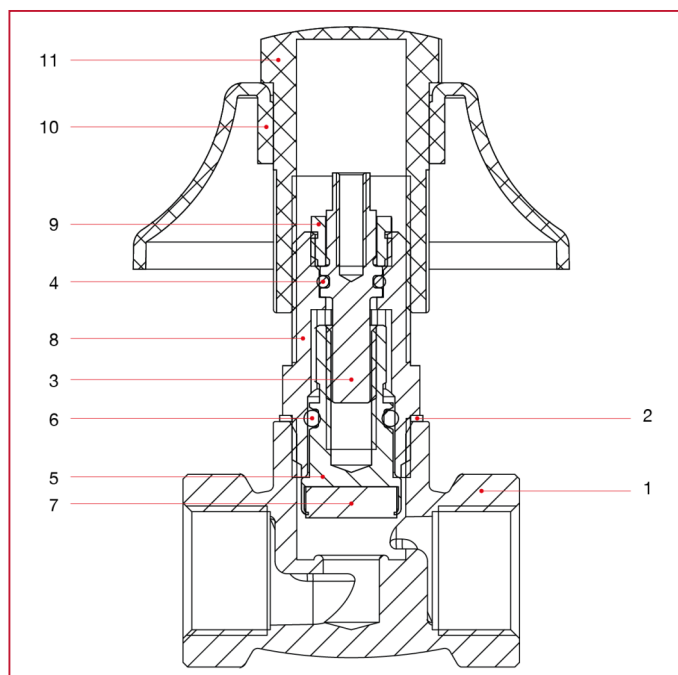




## BUILD-IN VALVES AND SUPPLY STOPS

	1/2"	3/4"
DN	15	20
A	54	59,5
B	103	107,5
C	33	33
D	70	70
E	31	35,5
F	14	14
Kg/cm2 bar	20	15
LBS - psi	290	217,5

### MATERIALS



POS.	DESCRIPTION	N.	MATERIAL
1	Body	1	Brass CW617N
2	Washer	1	Aluminium
3	Stem	1	Brass CW614N
4	O-ring	1	NBR
5	Screw	1	Brass CW614N
6	O-ring	1	NBR
7	Cap	1	NBR
8	Bonnet body	1	Brass CW614N
9	Nut	1	Brass CW614N
10	Cover-plate	1	Chrome-plated ABS
11	Cap	1	Chrome-plated ABS





## BUILD-IN VALVES AND SUPPLY STOPS

### PROL340 Spacer



#### CODE

PROL340

#### PACKING

1/150

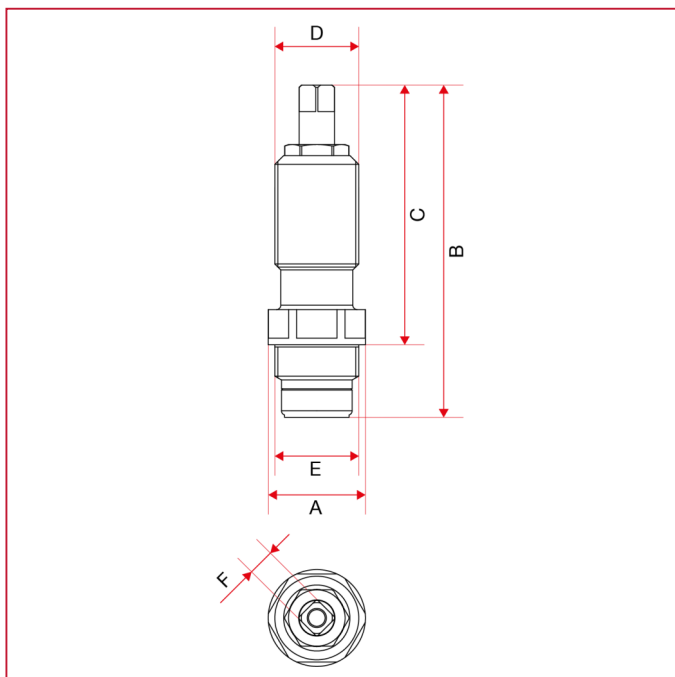
#### TECHNICAL SPECIFICATIONS

Thread: 19x19Fx1".

Length A: 59 mm.

Suitable for art. 340.

#### OVERALL DIMENSIONS

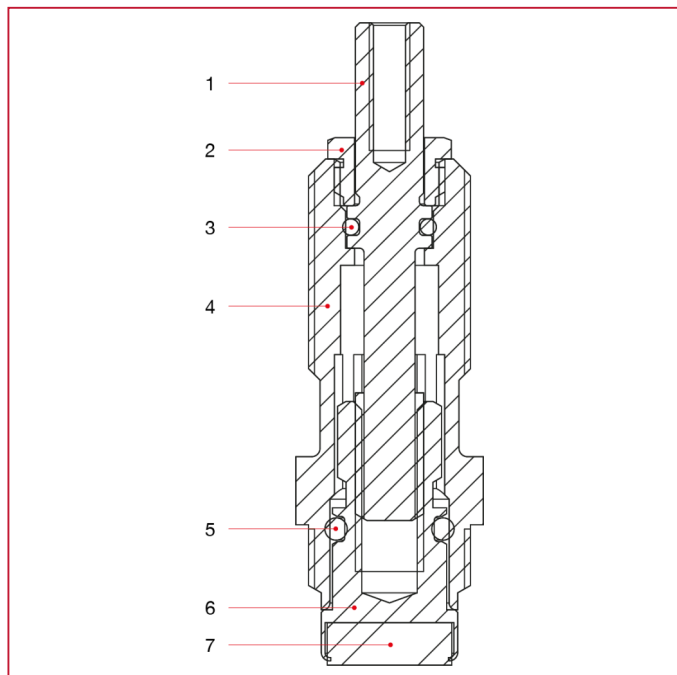


A	22
B	75,5
C	59
D	W19x19F x1
E	W19x19F x1
F	6



## BUILD-IN VALVES AND SUPPLY STOPS

### MATERIALS



POS.	DESCRIPTION	N.	MATERIAL
1	Stem	1	Brass CW614N
2	Stem stop	1	Brass CW614N
3	O-ring	1	NBR
4	Body	1	Brass CW614N
5	O-ring	1	NBR
6	Screw	1	Brass CW614N
7	Cap	1	NBR



## BUILD-IN VALVES AND SUPPLY STOPS

### 345 Build-in valve with handle



MEASURE	PRESSURE	CODE	PACKING
1/2" (DN 15)	20bar/290psi	3450012	4/32
3/4" (DN 20)	15bar/217.5psi	3450034	4/20

#### CERTIFICATIONS



#### TECHNICAL SPECIFICATIONS

Female/female threads.

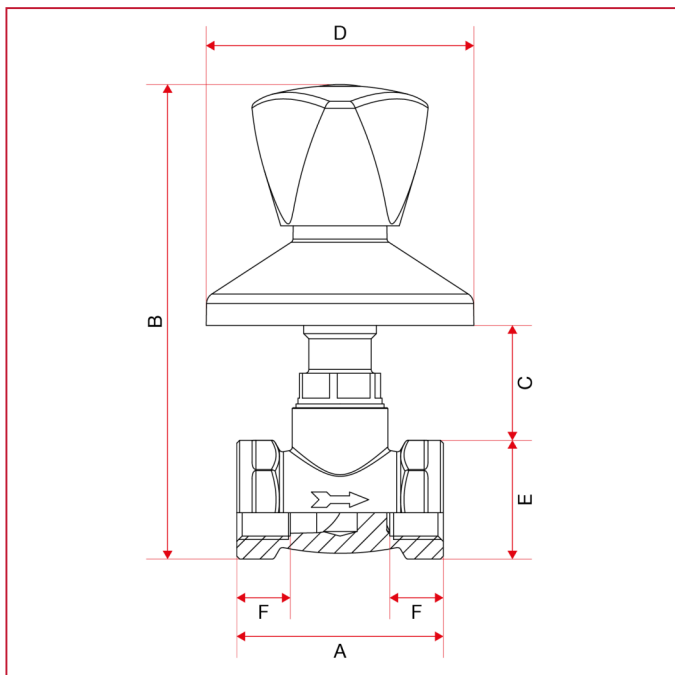
Body in brass.

Cover plate and handle in chrome-plated ABS.

Minimum and maximum working temperatures: 0°C, 110°C in absence of steam.

Threads: ISO 228 (equivalent to DIN EN ISO 228 and BS EN ISO 228).

#### OVERALL DIMENSIONS

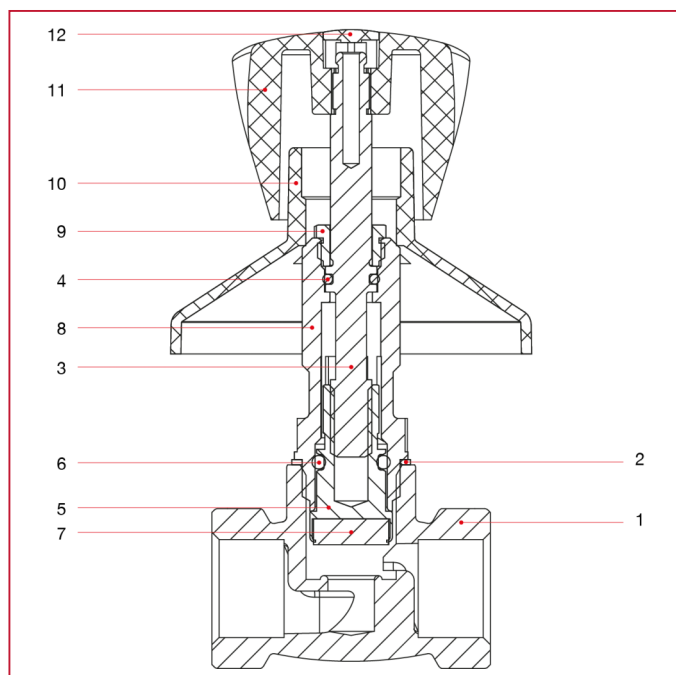




## BUILD-IN VALVES AND SUPPLY STOPS

	1/2"	3/4"
DN	15	20
A	54	59,5
B	124	127,5
C	30	30
D	70	70
E	31	35,5
F	14	14
Kg/cm2 bar	20	15
LBS - psi	290	217,5

### MATERIALS



POS.	DESCRIPTION	N.	MATERIAL
1	Build-in valve' body	1	Brass CW617N
2	Washer	1	Aluminium
3	Stem	1	Brass CW614N
4	O-ring	1	NBR
5	Screw	1	Brass CW614N
6	O-ring	1	NBR
7	Cap	1	NBR
8	Bonnet body	1	Brass CW614N
9	Nut	1	Brass CW614N
10	Cover-plate	1	Chrome-plated ABS
11	Handle	1	Chrome-plated ABS
12	Clip	1	Chrome-plated ABS



## BUILD-IN VALVES AND SUPPLY STOPS

### 136 Build-in valve with blind cap



MEASURE	PRESSURE	CODE	PACKING
1/2" (DN 15)	30bar/435psi	1360012	8/48
3/4" (DN 20)	25bar/362.5psi	1360034	5/30

#### CERTIFICATIONS



#### TECHNICAL SPECIFICATIONS

Full flow.

Female/female threads.

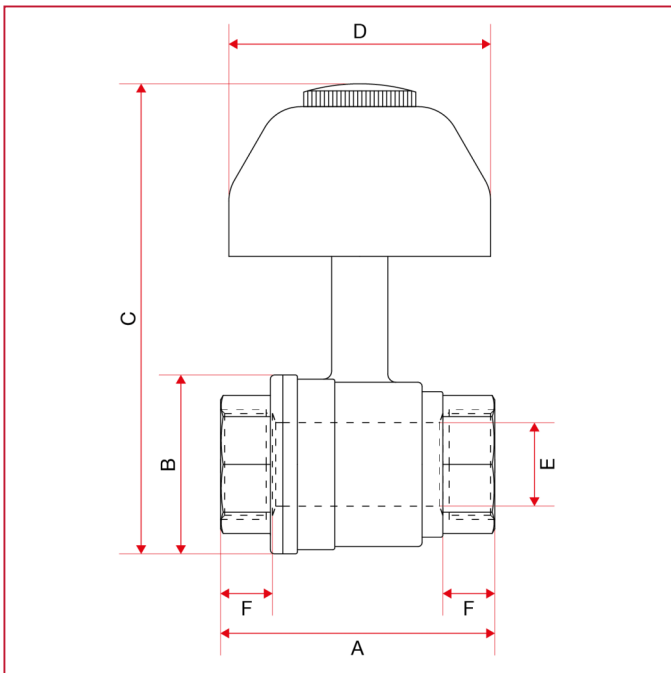
Body in brass.

Cover plate and cap in chrome-plated brass.

Minimum and maximum working temperatures: 0°C, 110°C in absence of steam.

Threads: ISO 228 (equivalent to DIN EN ISO 228 and BS EN ISO 228).

#### OVERALL DIMENSIONS

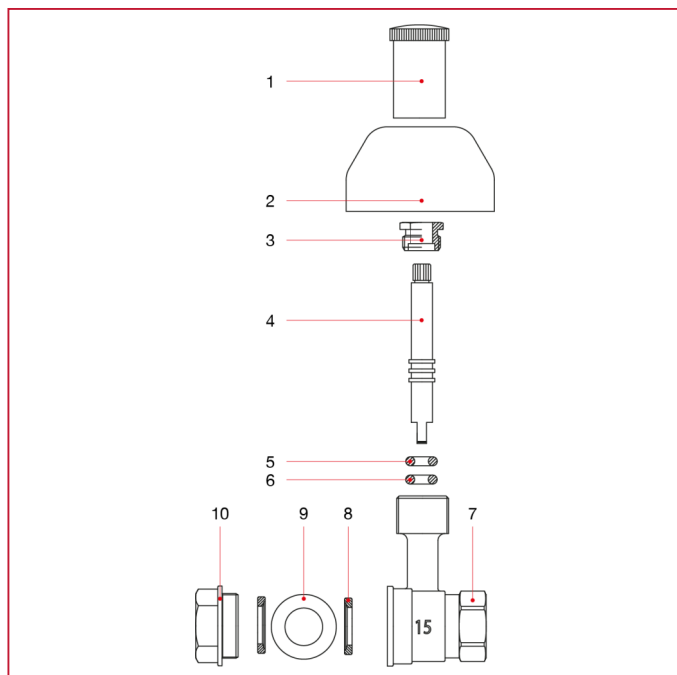




## BUILD-IN VALVES AND SUPPLY STOPS

	1/2"	3/4"
DN	15	20
A	56	67
B	34	43
C	109	118
D	63	63
E	15	20
F	12	14
Kg/cm <sup>2</sup> bar	30	25
LBS - psi	435	362,5

### MATERIALS



POS.	DESCRIPTION	N.	MATERIAL
1	Cap	1	Chrome-plated brass
2	Cover-plate	1	Chrome-plated brass
3	Packing gland	1	Brass CW614N
4	Stem	1	Brass CW614N
5	O-ring	1	NBR
6	O-ring	1	NBR
7	Body	1	Brass CW617N
8	Seat	2	P.T.F.E.
9	Ball	1	Chrome-plated brass CW617N
10	End adapter	1	Brass CW617N





## BUILD-IN VALVES AND SUPPLY STOPS

### 138 Build-in valve with handle



MEASURE	PRESSURE	CODE	PACKING
1/2" (DN 15)	30bar/435psi	1380012	8/48
3/4" (DN 20)	25bar/362.5psi	1380034	5/30
1" (DN 25)	25bar/362.5psi	1380100	4/24

#### CERTIFICATIONS



#### TECHNICAL SPECIFICATIONS

Full flow.

Female/female threads.

Body in brass.

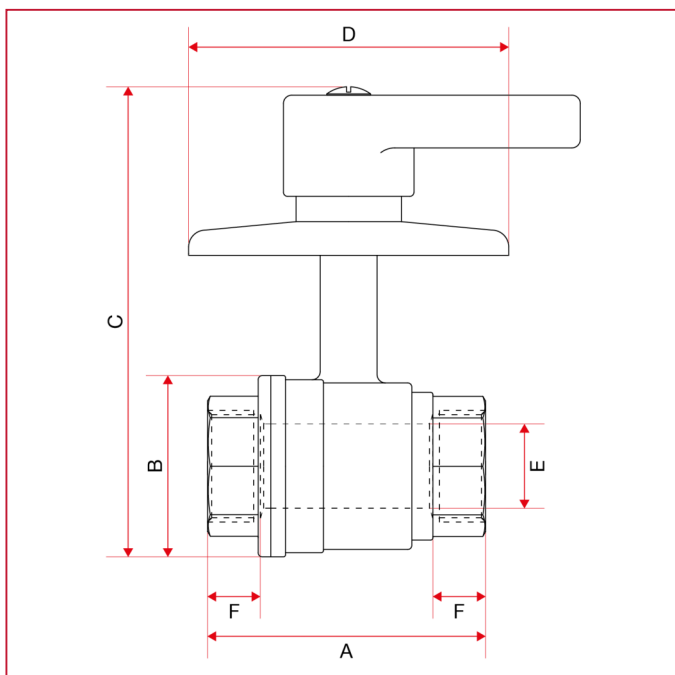
Cover plate in stainless steel.

Lever handle in chrome-plated brass.

Minimum and maximum working temperatures: 0°C, 110°C in absence of steam.

Threads: ISO 228 (equivalent to DIN EN ISO 228 and BS EN ISO 228).

#### OVERALL DIMENSIONS

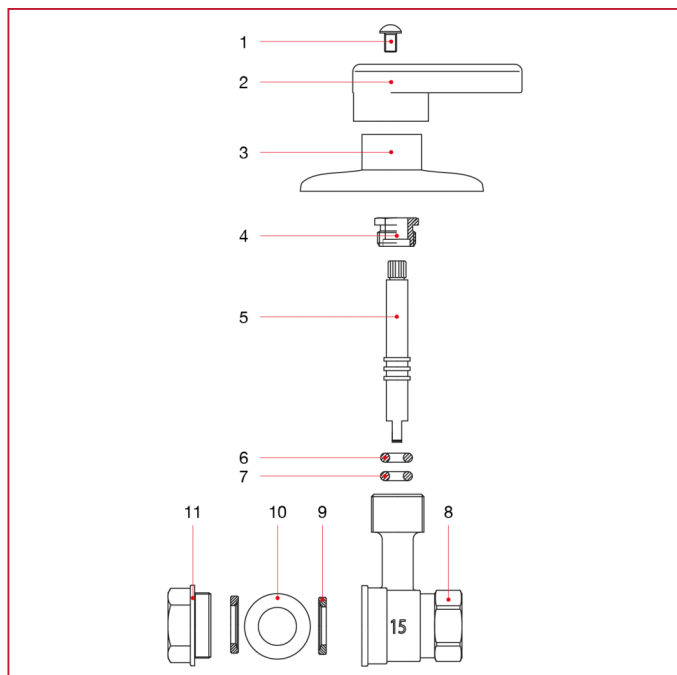




## BUILD-IN VALVES AND SUPPLY STOPS

	1/2"	3/4"	1"
DN	15	20	25
A	58	70	82
B	34	43	52
C	100	111	116
D	100	100	100
E	15	20	25
F	14	15	18
Kg/cm <sup>2</sup> bar	30	25	25
LBS - psi	435	362,5	362,5

### MATERIALS



POS.	DESCRIPTION	N.	MATERIAL
1	Screw	1	Zinc-plated steel Fe CB4
2	Handle	1	Chrome-plated brass CW617N
3	Cover-plate	1	Stainless steel AISI 430BA
4	Packing gland	1	Brass CW614N
5	Stem	1	Brass CW614N
6	O-ring	1	NBR
7	O-ring	1	NBR
8	Body	1	Brass CW617N
9	Seat	2	P.T.F.E.
10	Ball	1	Chrome-plated brass CW617N
11	End adapter	1	Brass CW617N



## BUILD-IN VALVES AND SUPPLY STOPS

### PROL136 Spacer



CODE	PACKING
PROL136	1/150

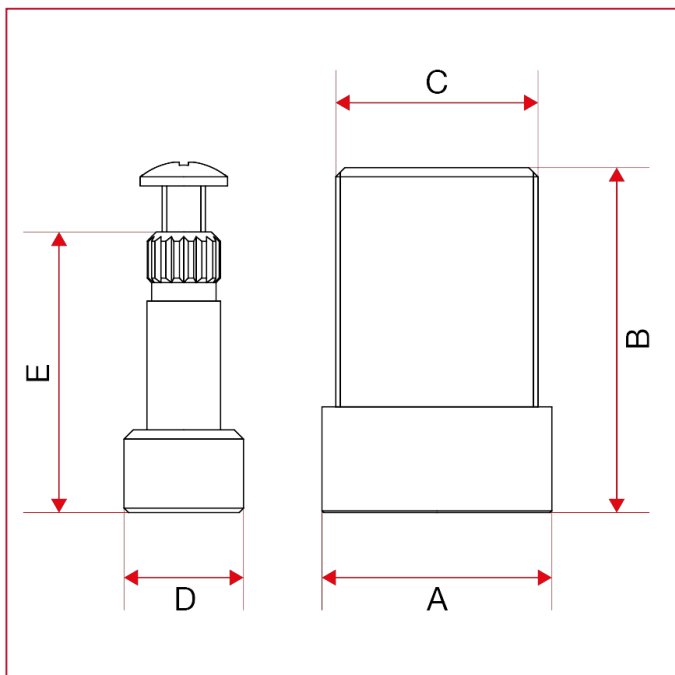
#### TECHNICAL SPECIFICATIONS

Thread: 22x19F x 1".

Length A: 37,5 mm.

Suitable for art. 136 and 138 - 1/2" and 3/4".

#### OVERALL DIMENSIONS

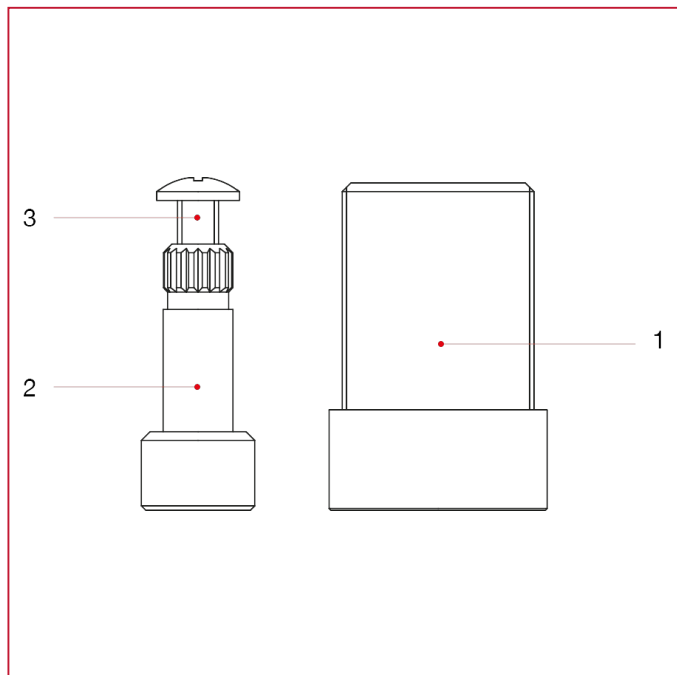


A	25
B	37,5
C	W22x19F x1
D	13
E	30,5



## BUILD-IN VALVES AND SUPPLY STOPS

### MATERIALS



POS.	DESCRIPTION	N.	MATERIAL
1	Body	1	Brass CW614N
2	Extension for stem	1	Brass CW614N
3	Screw	1	Zinc-plated steel



## BUILD-IN VALVES AND SUPPLY STOPS

### 346 Supply stop



MEASURE	PRESSURE	CODE	PACKING
1/2" (DN 15)	8bar/116psi	3460012	10/120

#### CERTIFICATIONS



#### TECHNICAL SPECIFICATIONS

Available size 1/2"x1/2".

Male thread.

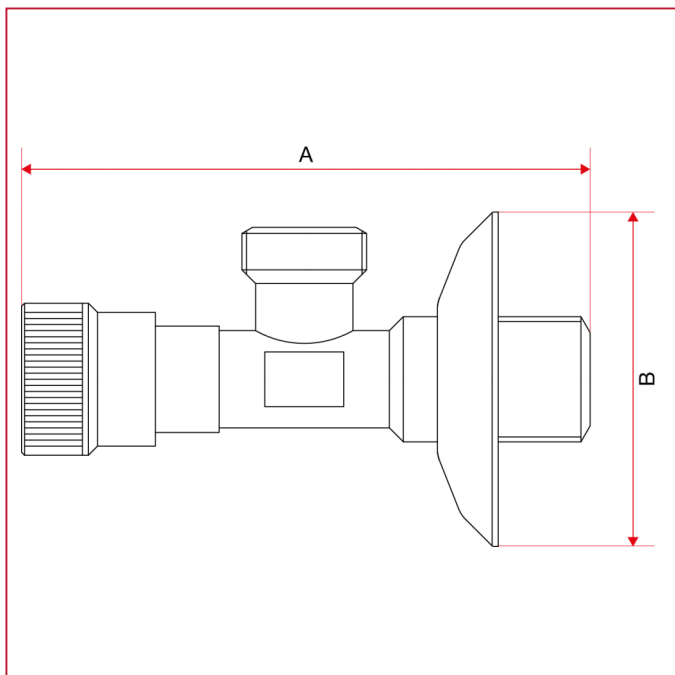
Body in chrome-plated brass.

Cover plate in stainless steel.

Minimum and maximum working temperatures: 0°C, 80°C.

Threads: ISO 228 (equivalent to DIN EN ISO 228 and BS EN ISO 228).

#### OVERALL DIMENSIONS

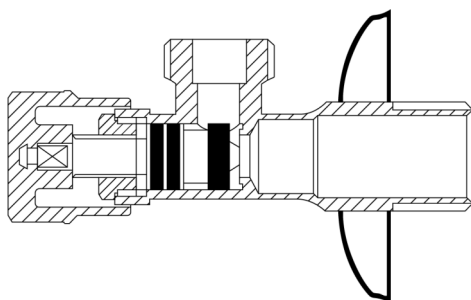




## BUILD-IN VALVES AND SUPPLY STOPS

	1/2"
A	90
B	55
Kg/cm <sup>2</sup> bar	8
LBS - psi	116

### MATERIALS



POS.	DESCRIPTION	N.	MATERIAL
1	Body	-	Chrome-plated brass CW617N
2	Washers	-	NBR
3	Ring	-	P.T.F.E.
4	Handle	-	Chrome-plated ABS
5	Cover plate	-	Stainless steel AISI 430





## BUILD-IN VALVES AND SUPPLY STOPS

### 348 Supply stop with nut and washer



MEASURE	PRESSURE	CODE	PACKING
1/2" (DN 15)	8bar/116psi	3480012	10/140

#### CERTIFICATIONS



#### TECHNICAL SPECIFICATIONS

Available size 1/2"x mm.10.

Male thread.

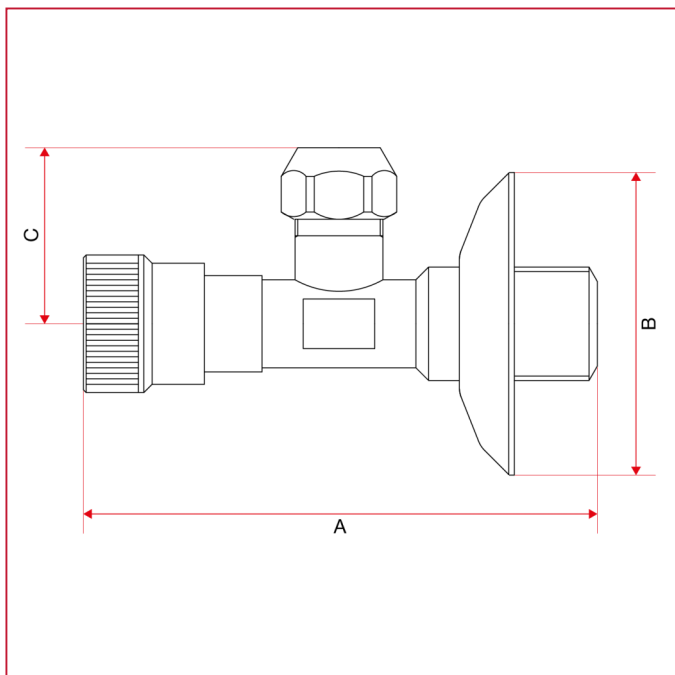
Body in chrome-plated brass.

Cover plate in stainless steel.

Minimum and maximum working temperatures: 0°C, 80°C.

Threads: ISO 228 (equivalent to DIN EN ISO 228 and BS EN ISO 228).

#### OVERALL DIMENSIONS

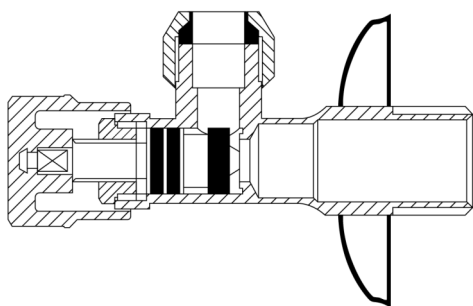




## BUILD-IN VALVES AND SUPPLY STOPS

	1/2"
A	90
B	55
C	31
Kg/cm2 bar	8
LBS - psi	116

### MATERIALS



POS.	DESCRIPTION	N.	MATERIAL
1	Body	-	Chrome-plated brass CW617N
2	Washers	-	NBR
3	Ring	-	P.T.F.E.
4	Handle	-	Zamak
5	Cover plate	-	Stainless steel AISI 430



## BUILD-IN VALVES AND SUPPLY STOPS

### 348SD Supply stop without nut



MEASURE	PRESSURE	CODE	PACKING
1/2" (DN 15)	8bar/116psi	3480012SD	10/120

#### CERTIFICATIONS



#### TECHNICAL SPECIFICATIONS

Available size 1/2"x 3/8".

Male thread.

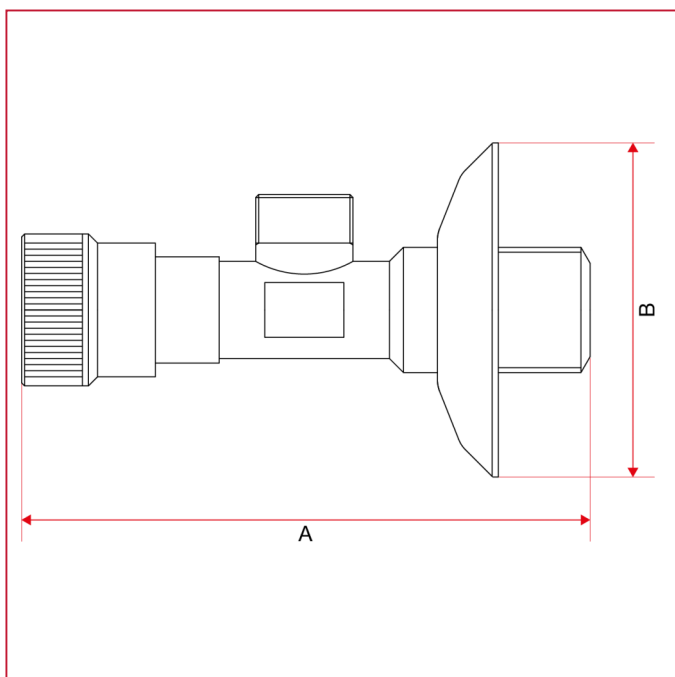
Body in chrome-plated brass.

Cover plate in stainless steel.

Minimum and maximum working temperatures: 0°C, 80°C.

Threads: ISO 228 (equivalent to DIN EN ISO 228 and BS EN ISO 228).

#### OVERALL DIMENSIONS

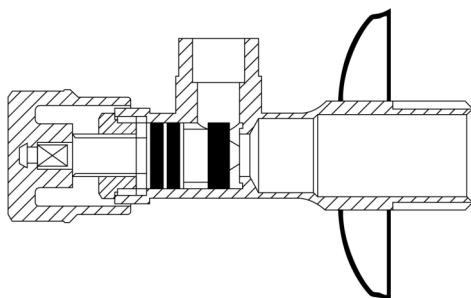




## BUILD-IN VALVES AND SUPPLY STOPS

	1/2"
A	90
B	55
LBS - psi	116

### MATERIALS



POS.	DESCRIPTION	N.	MATERIAL
1	Body	-	Chrome-plated brass CW617N
2	Washers	-	NBR
3	Ring	-	P.T.F.E.
4	Handle	-	Zamak
5	Cover plate	-	Stainless steel AISI 430



## BUILD-IN VALVES AND SUPPLY STOPS

### 385 Ball supply stop with strainer



MEASURE	PRESSURE	CODE	PACKING
1/2" (DN 15)	8bar/116psi	3850012	10/120

#### CERTIFICATIONS



#### TECHNICAL SPECIFICATIONS

Available size 1/2"x mm.10.

Male thread.

Body in chrome-plated brass.

Metal handle.

Cover plate in stainless steel.

Built-in strainer in stainless steel.

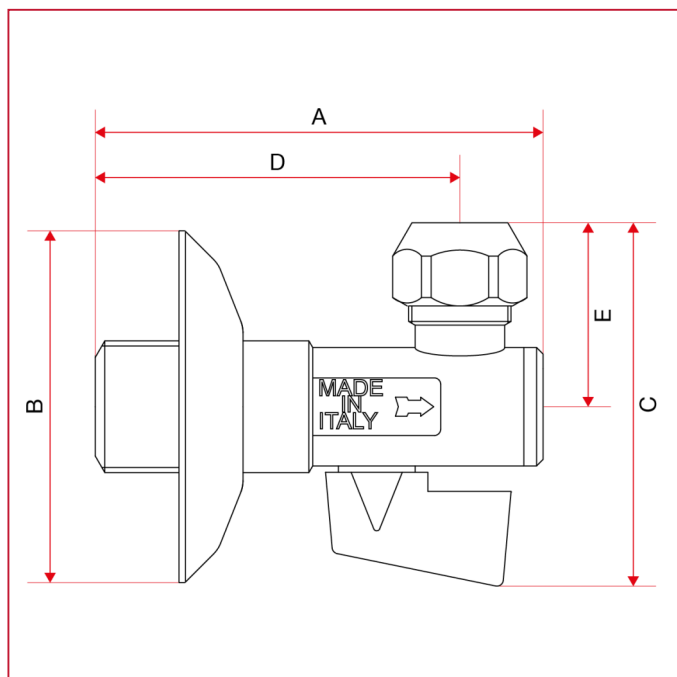
Minimum and maximum working temperatures: 0°C, 80°C.

Threads: ISO 228 (equivalent to DIN EN ISO 228 and BS EN ISO 228).



## BUILD-IN VALVES AND SUPPLY STOPS

### OVERALL DIMENSIONS



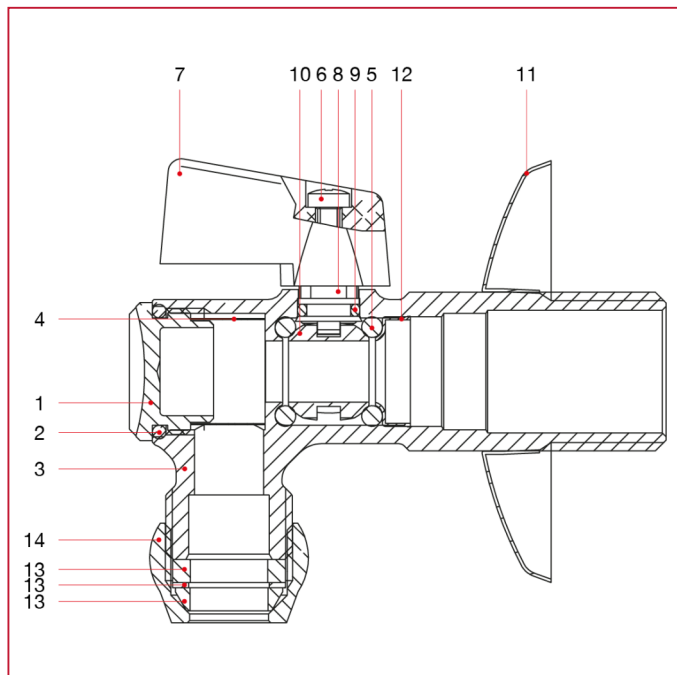
	1/2"
A	70
B	55
C	60,5
D	57
E	32,8
Kg/cm2 bar	8
LBS - psi	116





# BUILD-IN VALVES AND SUPPLY STOPS

## MATERIALS



POS.	DESCRIPTION	N.	MATERIAL
1	Cap	1	Chrome-plated brass CW617N
2	O-ring	1	NBR
3	Body	1	Chrome-plated brass CW617N
4	Strainer	1	Stainless steel AISI 304
5	O-ring	2	NBR
6	Screw	1	Zinc-plated steel
7	Lever handle	1	Zamak
8	Stem	1	Brass CW617N
9	O-ring	1	NBR
10	Ball	1	Chrome-plated brass CW617N
11	Cover-plate	1	Stainless steel AISI 430
12	Pressure ring	1	Brass CW508L
13	Olive	1	-
14	Nut	1	Chrome-plated brass CW617N



## BUILD-IN VALVES AND SUPPLY STOPS

### 386 Ball supply stop with articulated connection



MEASURE	PRESSURE	CODE	PACKING
1/2" (DN 15)	8bar/116psi	3860012	10/90

#### CERTIFICATIONS



#### TECHNICAL SPECIFICATIONS

Available size 1/2"x mm.10.

Male thread.

Body in chrome-plated brass.

Metal handle.

Cover plate in stainless steel.

Built-in strainer in stainless steel.

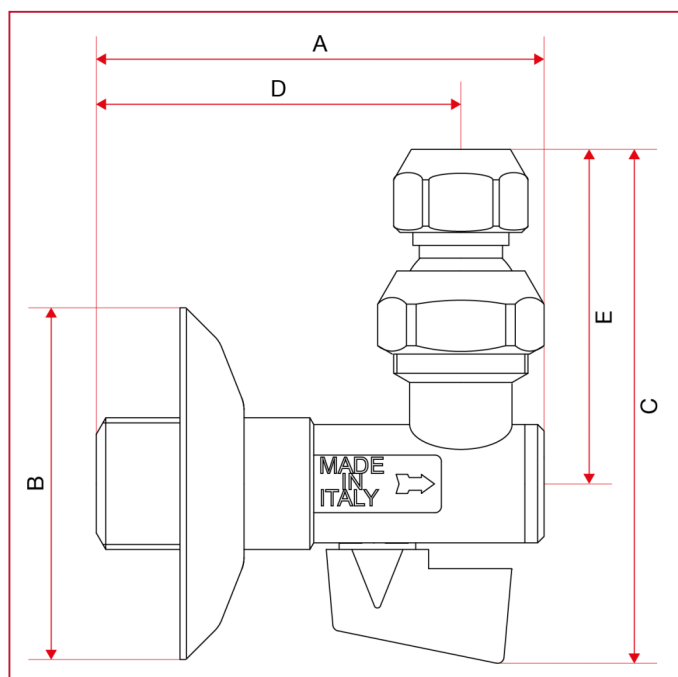
Minimum and maximum working temperatures: 0°C, 80°C.

Threads: ISO 228 (equivalent to DIN EN ISO 228 and BS EN ISO 228).



## BUILD-IN VALVES AND SUPPLY STOPS

### OVERALL DIMENSIONS

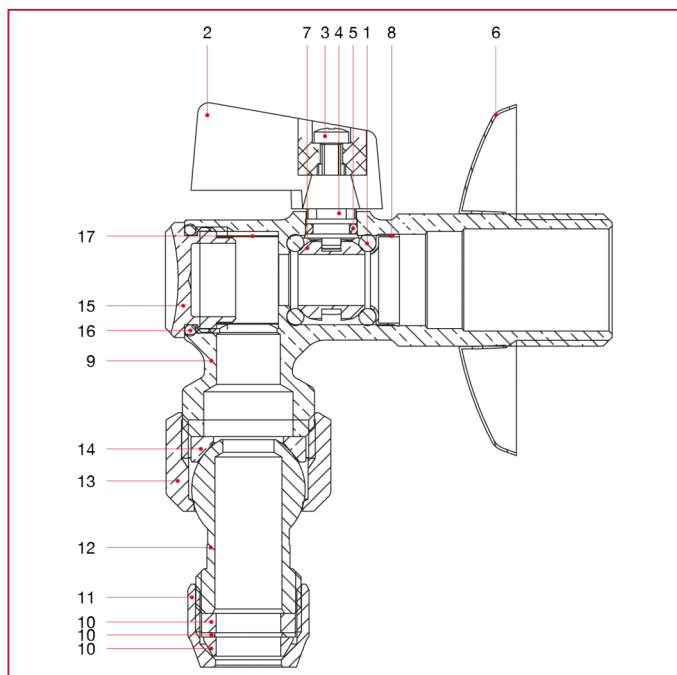


	1/2"
A	70
B	55
C	88,3
D	57
E	60,6
Kg/cm <sup>2</sup> bar	8
LBS - psi	116



# BUILD-IN VALVES AND SUPPLY STOPS

## MATERIALS



POS.	DESCRIPTION	N.	MATERIAL
1	O-ring	2	NBR
2	Lever handle	1	Zamak
3	Screw	1	Zinc-plated steel
4	Stem	1	Brass CW617N
5	O-ring	1	NBR
6	Cover plate	1	Stainless steel AISI 430
7	Ball	1	Chrome-plated brass CW617N
8	Pressure ring	1	Brass CW617N
9	Body	1	Chrome-plated brass CW617N
10	3-pieces ogive	1	-
11	Nut	1	Chrome-plated brass CW617N
12	Junction	1	Chrome-plated brass CW617N
13	Nut	1	Chrome-plated brass CW617N
14	O-ring	1	NBR
15	Cap	1	Chrome-plated brass CW617N
16	O-ring	1	NBR
17	Strainer	1	Stainless steel AISI 304



## BUILD-IN VALVES AND SUPPLY STOPS

### 387 Supply stop and washing machine valve



MEASURE	PRESSURE	CODE	PACKING
1/2" (DN 15)	8bar/116psi	3870012	1/38

#### CERTIFICATIONS



#### TECHNICAL SPECIFICATIONS

Male thread.

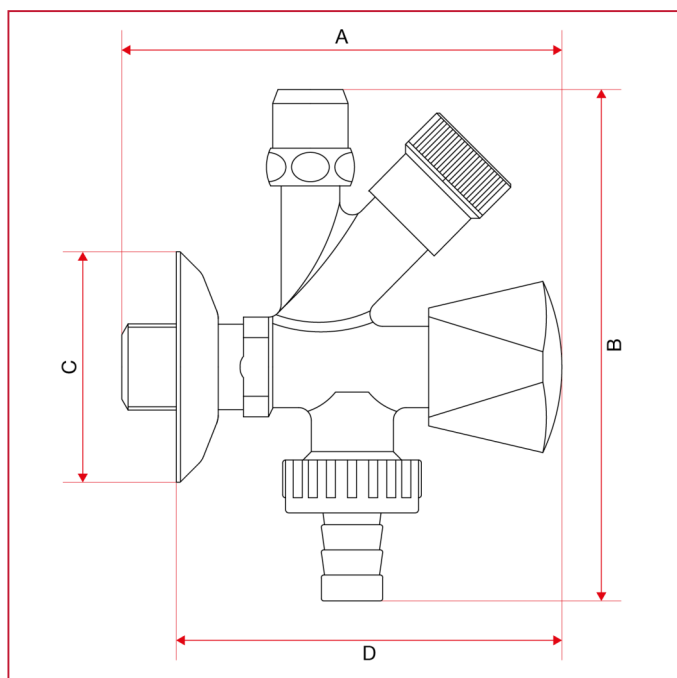
Body in chrome-plated brass.

Cover plate in stainless steel.

Minimum and maximum working temperature: 0°C, 80°C.

Threads: ISO 228 (equivalent to DIN EN ISO 228 and BS EN ISO 228).

#### OVERALL DIMENSIONS

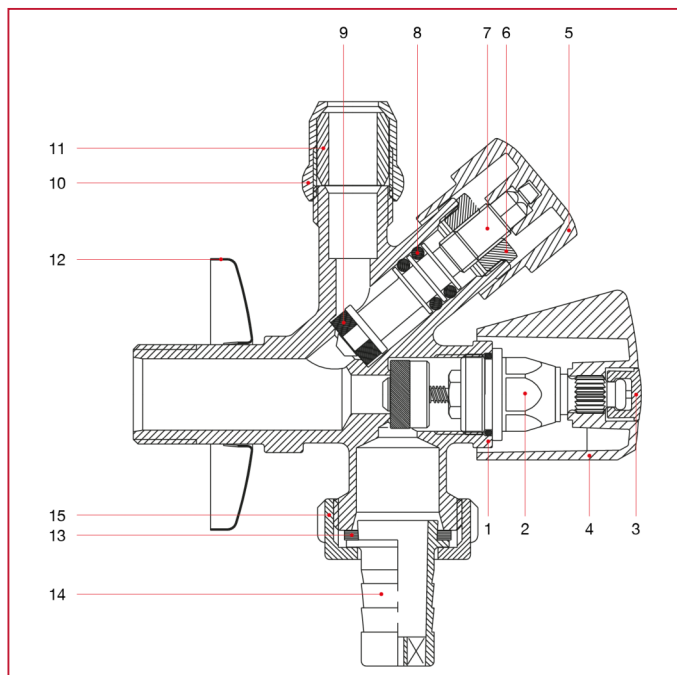




## BUILD-IN VALVES AND SUPPLY STOPS

	1/2"
A	105
B	116
C	56
D	87
Kg/cm <sup>2</sup> bar	8
LBS - psi	116

### MATERIALS



POS.	DESCRIPTION	N.	MATERIAL
1	Body	1	Chrome-plated brass CW617N
2	Bonnet	1	Brass CW614N
3	Cap	1	POM
4	Handle	1	Chrome-plated ABS
5	Handle	1	Chrome-plated ABS
6	Nut	1	Brass CW614N
7	Stem	1	Brass CW614N
8	O-ring	2	NBR
9	Washer	1	NBR
10	Nut	1	Chrome-plated brass CW614N
11	Olive	1	Nylon
12	Cover-plate	1	Stainless steel
13	Washer	1	NBR
14	Hose connection	1	Nylon
15	Nut	1	Nylon





## BUILD-IN VALVES AND SUPPLY STOPS

### 906 Ball supply stop with strainer



MEASURE	PRESSURE	CODE	PACKING
1/2" (DN 15)	8bar/116psi	9060012	10/90

#### CERTIFICATIONS



#### TECHNICAL SPECIFICATIONS

Available size 1/2"x mm.10.

Male thread.

Body in chrome-plated brass.

Metal handle.

Cover plate in stainless steel.

Built-in strainer in stainless steel.

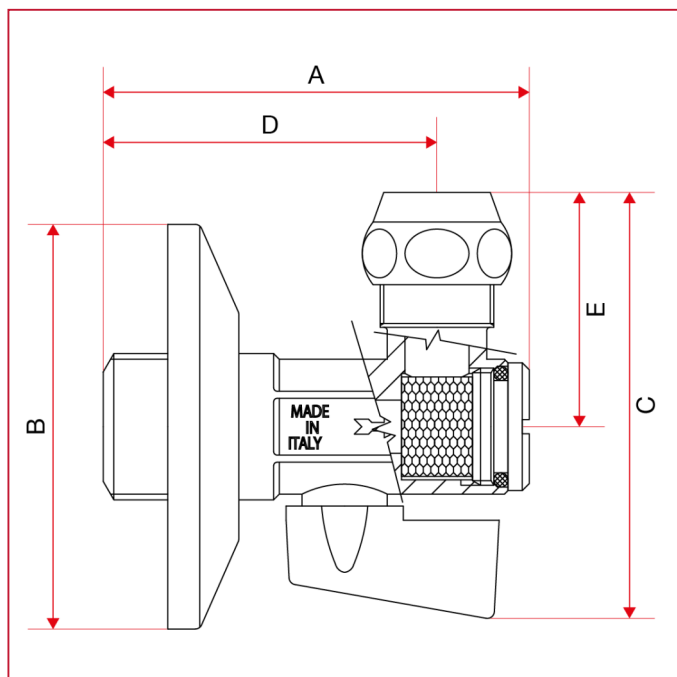
Minimum and maximum working temperatures: 0°C, 80°C.

Threads: ISO 228 (equivalent to DIN EN ISO 228 and BS EN ISO 228).



## BUILD-IN VALVES AND SUPPLY STOPS

### OVERALL DIMENSIONS

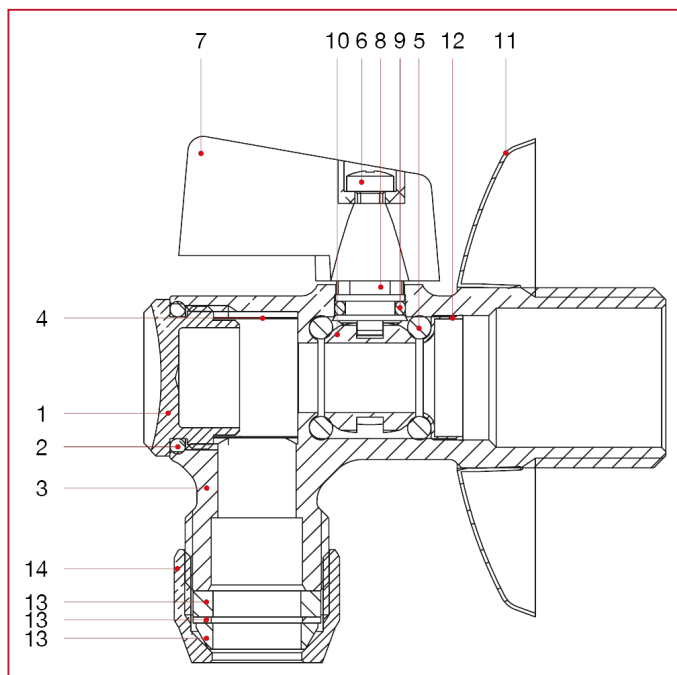


	1/2"
A	60
B	55
C	60,5
D	47
E	32,8
Kg/cm <sup>2</sup> bar	8
LBS - psi	116



# BUILD-IN VALVES AND SUPPLY STOPS

## MATERIALS



POS.	DESCRIPTION	N.	MATERIAL
1	Cap	1	Chrome-plated brass CW617N
2	O-ring	1	NBR
3	Body	1	Chrome-plated brass CW617N
4	Strainer	1	Stainless steel AISI 304
5	O-ring	2	NBR
6	Screw	1	Zinc-plated steel
7	Handle	1	Zamak
8	Stem	1	Brass CW617N
9	O-ring	1	NBR
10	Ball	1	Chrome-plated brass CW617N
11	Cover-plate	1	Stainless steel AISI 430
12	Pressure ring	1	Brass CW508L
13	Olive	1	-
14	Nut	1	Chrome-plated brass CW617N



## BUILD-IN VALVES AND SUPPLY STOPS

### 906SD Ball supply stop with strainer without nut



MEASURE	PRESSURE	CODE	PACKING
1/2" (DN 15)	8bar/116psi	9060012SD	10/90

#### CERTIFICATIONS



#### TECHNICAL SPECIFICATIONS

Available size 1/2"x 3/8".

Male thread.

Body in chrome-plated brass.

Metal handle.

Cover plate in stainless steel.

Built-in strainer in stainless steel.

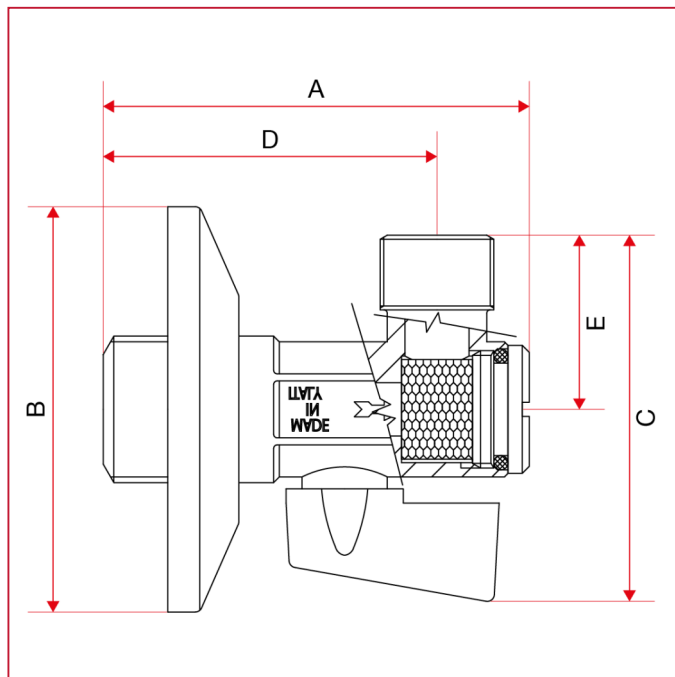
Minimum and maximum working temperatures: 0°C, 80°C.

Threads: ISO 228 (equivalent to DIN EN ISO 228 and BS EN ISO 228).



## BUILD-IN VALVES AND SUPPLY STOPS

### OVERALL DIMENSIONS

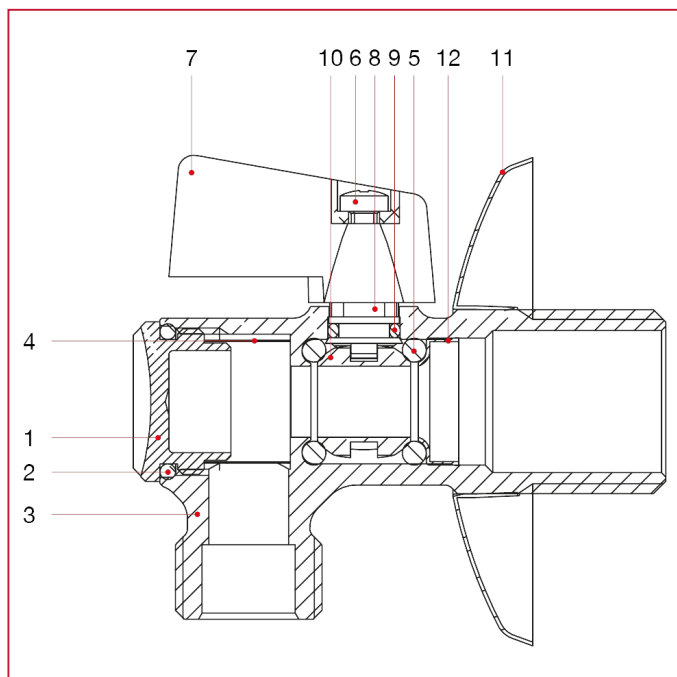


	1/2"
A	60
B	55
C	60,5
D	47
E	32,8
LBS - psi	116



## BUILD-IN VALVES AND SUPPLY STOPS

### MATERIALS



POS.	DESCRIPTION	N.	MATERIAL
1	Cap	1	Chrome-plated brass CW617N
2	O-ring	1	NBR
3	Body	1	Chrome-plated brass CW617N
4	Strainer	1	Stainless steel AISI 304
5	O-ring	2	NBR
6	Screw	1	Zinc-plated steel
7	Handle	1	Zamak
8	Stem	1	Brass CW617N
9	O-ring	1	NBR
10	Ball	1	Chrome-plated brass CW617N
11	Cover-plate	1	Stainless steel AISI 430



## BUILD-IN VALVES AND SUPPLY STOPS

### 285 Stainless steel rosette

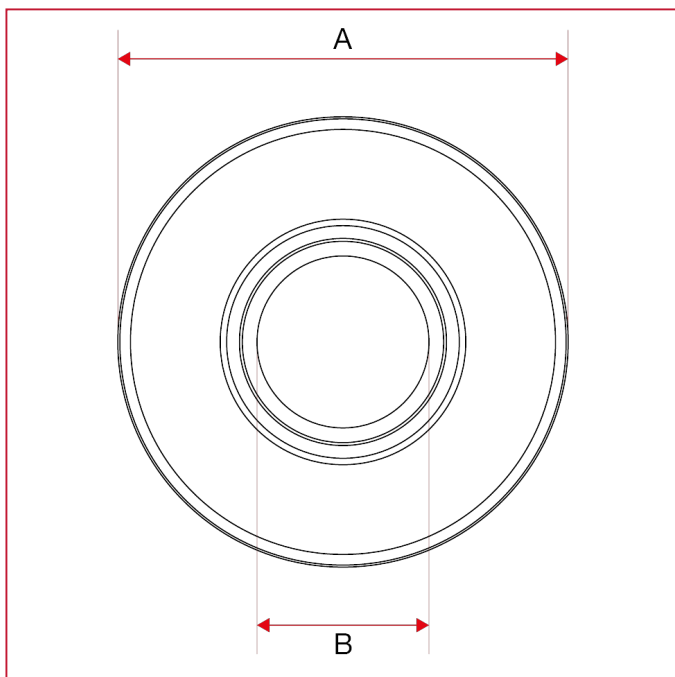


MEASURE	CODE	PACKING
1/2" (DN 15)	2850012	100/1500

#### CERTIFICATIONS



#### OVERALL DIMENSIONS

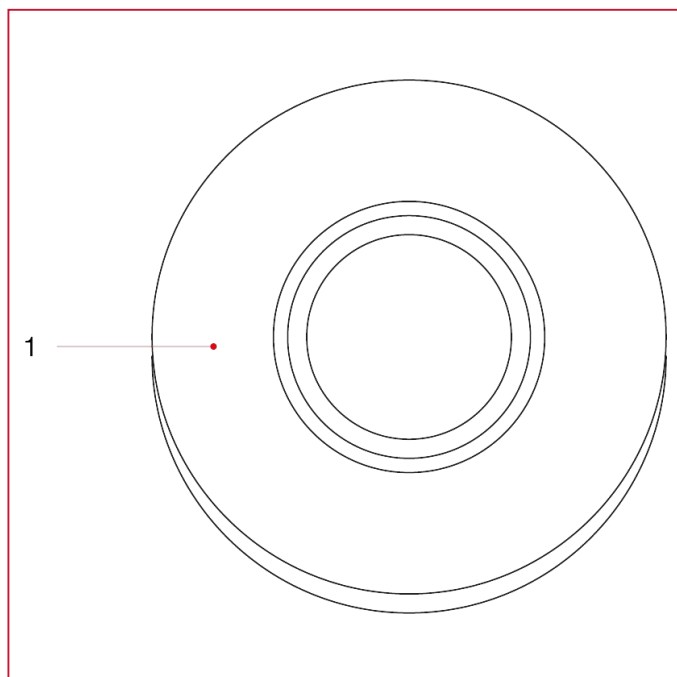


	1/2"
DN	15
A	55
B	21,1



## BUILD-IN VALVES AND SUPPLY STOPS

### MATERIALS



POS.	DESCRIPTION	N.	MATERIAL
1	Cover-plate	1	Stainless steel AISI 430





**ITAP S.p.A.**  
Via Ruca 19  
25065 Lumezzane  
Brescia (ITALY)  
Tel 030 8927011  
Fax 030 8921990  
[www.itap.it](http://www.itap.it) - [info@itap.it](mailto:info@itap.it)

We reserve the right to make improvements  
and changes to the products described  
herein and to the relative technical data, at  
any time and without forewarning.

rev. 20250402