



TECHNICAL CATALOGUE

TWO-PIPE VALVES FOR PANEL RADIATORS

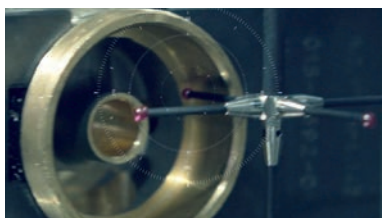
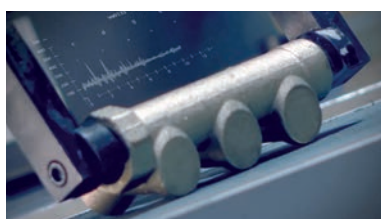


> THE COMPANY

ITAP SpA, founded in Lumezzane (Brescia) in 1972, is currently one of the leading production companies in Italy of **valves, fittings and distribution manifolds** for plumbing and heating systems.

Thanks to a fully automated production process, with 85 transfer machines and 55 assembly lines, it is capable of producing 400,000 pieces per day.

Our innate pursuit for innovation and observance of technical regulations is supported by the company certification ISO 9001. The company has always considered its focus on quality as the main tool to obtain significant business results: today ITAP SpA is proud to offer products bearing the approval of numerous international certifying bodies.



> ITAP products have obtained approvals by more than 30 certification bodies from all over the world.





TWO-PIPE VALVES FOR PANEL RADIATORS

305 Straight two-pipe valve



MEASURE	PRESSURE	CODE	PACKING
3/4" (DN 20) EUROKONUS	10bar/145psi	3050034	6/72

CERTIFICATIONS



TECHNICAL SPECIFICATIONS

Body in nickel-plated brass.

Floor connections.

Radiator connections: 3/4" flat seat.

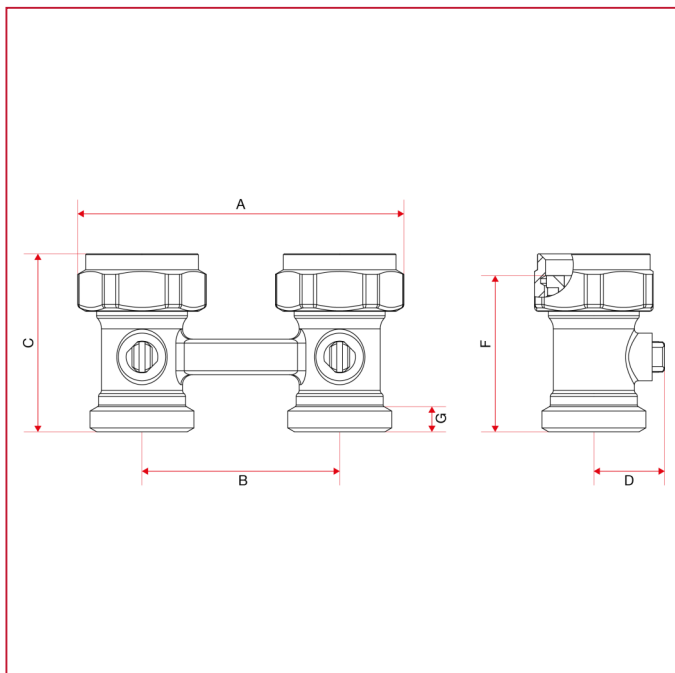
Pipe connection: 3/4" Eurokonus.

Centres distance: mm.50.

Working temperatures: -10°C, 90°C.

Threads: ISO 228 (equivalent to DIN EN ISO 228 and BS EN ISO 228).

OVERALL DIMENSIONS

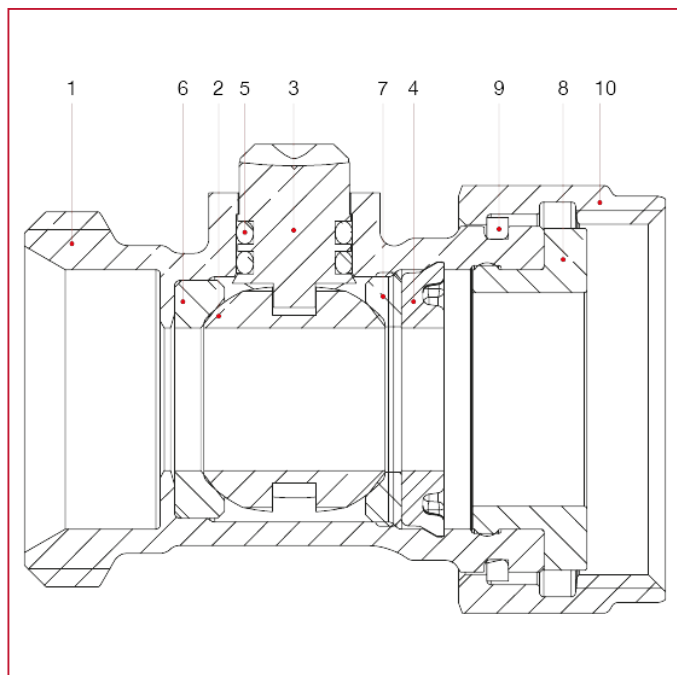




TWO-PIPE VALVES FOR PANEL RADIATORS

	3/4"
DN	20
A	82,5
B	50
C	44,9
D	17,9
F	39,4
G	6,5
Kg/cm2 bar	10
LBS - psi	145

MATERIALS



POS.	DESCRIPTION	N.	MATERIAL
1	Straight H body	1	Nickel-plated brass CW617N
2	Ball	2	Chrome-plated brass CW614N
3	Stem	2	Brass CW617N
4	Elastic ring	2	POM
5	O-ring	4	EPDM
6	Seat	2	EPDM
7	Seat for ring	2	EPDM
8	Nut	2	Nickel-plated brass CW617N
9	Stop ring	2	Stainless steel AISI 302
10	Washer	2	EPDM



TWO-PIPE VALVES FOR PANEL RADIATORS

315 Angle two-pipe valve



MEASURE	PRESSURE	CODE	PACKING
3/4" (DN 20) EUROKONUS	10bar/145psi	3150034	6/72

CERTIFICATIONS



TECHNICAL SPECIFICATIONS

Body in nickel-plated brass.

Wall connections.

Radiator connections: 3/4" flat seat.

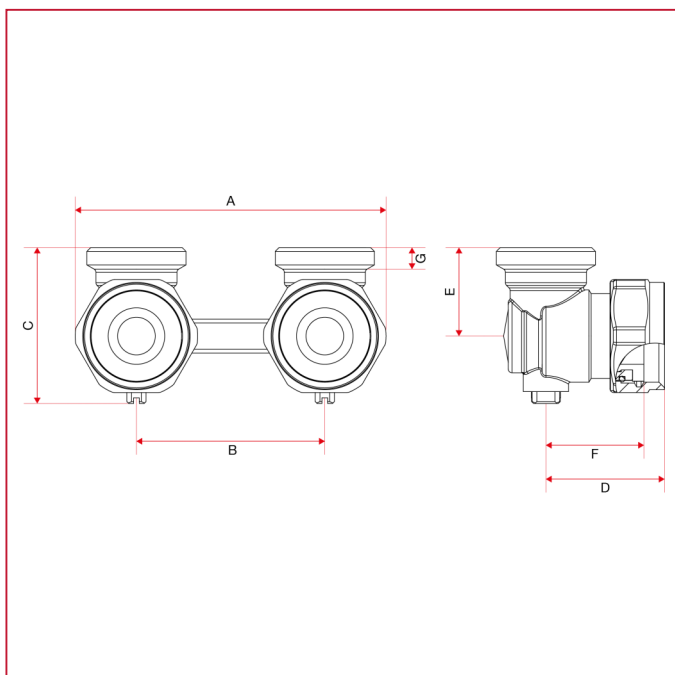
Pipe connection: 3/4" Eurokonus.

Centres distance: mm.50.

Working temperatures: -10°C, 90°C.

Threads: ISO 228 (equivalent to DIN EN ISO 228 and BS EN ISO 228).

OVERALL DIMENSIONS

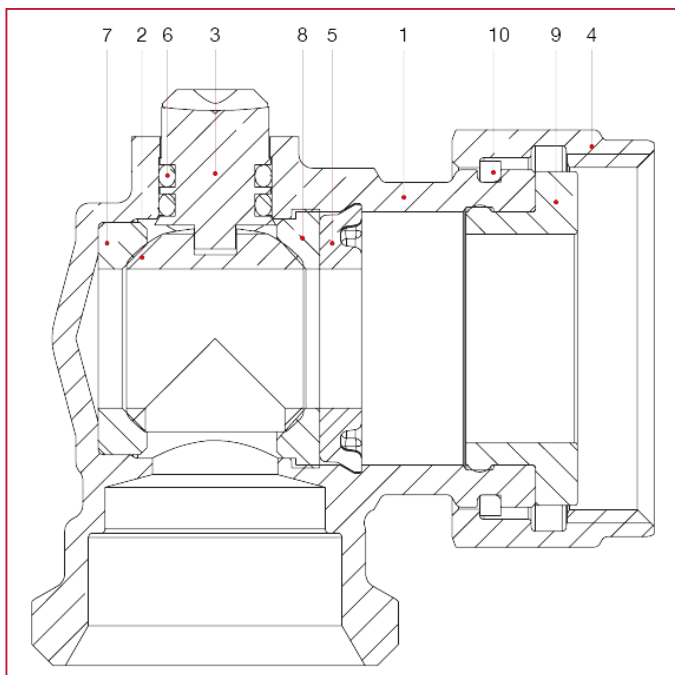




TWO-PIPE VALVES FOR PANEL RADIATORS

	3/4"
DN	20
A	82,5
B	50
C	41,4
D	31,5
E	23,5
F	26
G	6
Kg/cm ² bar	10
LBS - psi	145

MATERIALS



POS.	DESCRIPTION	N.	MATERIAL
1	Angle H body	1	Nickel-plated brass CW617N
2	Ball	2	Chrome-plated brass CW617N
3	Stem	2	Brass CW617N
4	Nut	2	Nickel-plated brass CW617N
5	Elastic ring	2	POM
6	O-ring	4	EPDM
7	Seat	2	EPDM
8	Seat for ring	2	EPDM
9	Washer	2	EPDM
10	Stop ring	2	Stainless steel AISI 302



TWO-PIPE VALVES FOR PANEL RADIATORS

306 Fittings for panel radiators, with thread 1/2"F



MEASURE	CODE	PACKING
1/2" - 3/4"	3060012034	48/672

CERTIFICATIONS



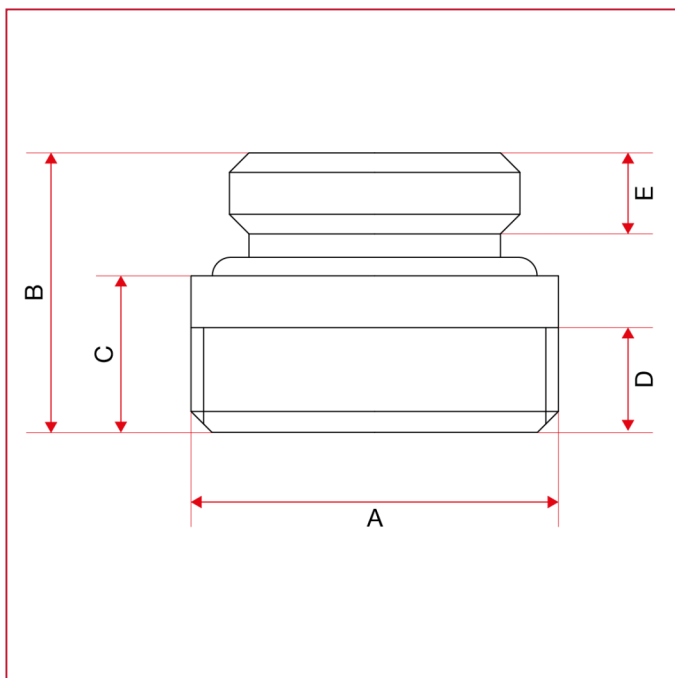
TECHNICAL SPECIFICATIONS

Body in brass.

Working temperatures: -10°C, 90°C.

Threads: ISO 228 (equivalent to DIN EN ISO 228 and BS EN ISO 228).

OVERALL DIMENSIONS

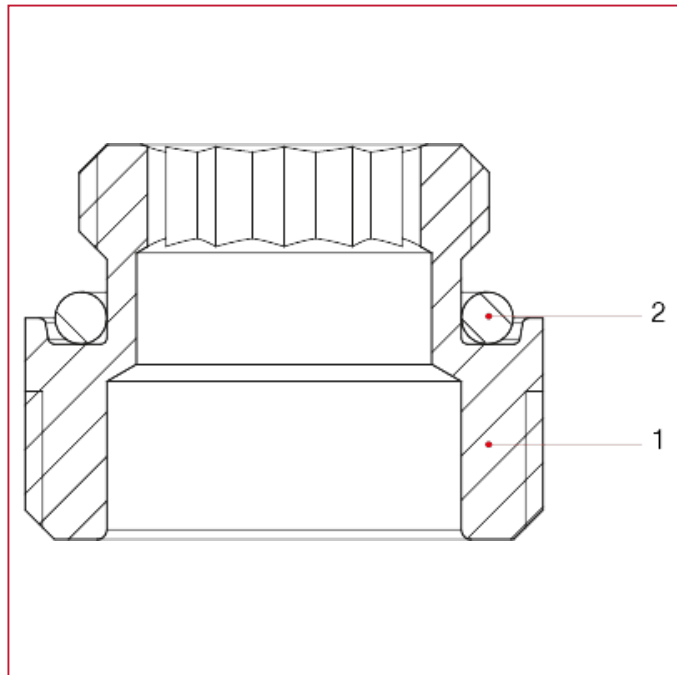




TWO-PIPE VALVES FOR PANEL RADIATORS

	1/2" - 3/4"
A	26,3
B	20
C	11,2
D	7,5
E	5,8

MATERIALS



POS.	DESCRIPTION	N.	MATERIAL
1	Fitting	1	Brass CW614N
2	O-ring	1	EPDM



TWO-PIPE VALVES FOR PANEL RADIATORS

306K Adapter for panel radiators, with thread 3/4" M



CODE

306K

PACKING

2/800

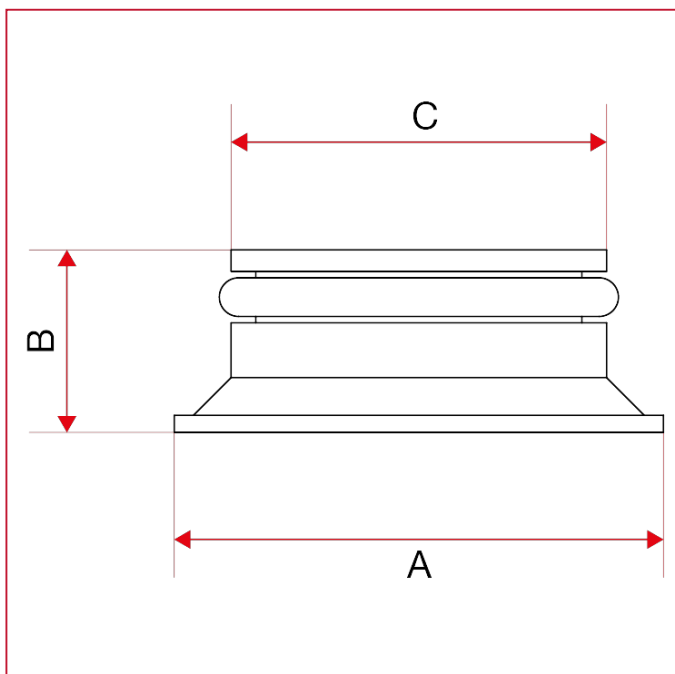
CERTIFICATIONS



TECHNICAL SPECIFICATIONS

Working temperatures: -10°C, 90°C.

OVERALL DIMENSIONS

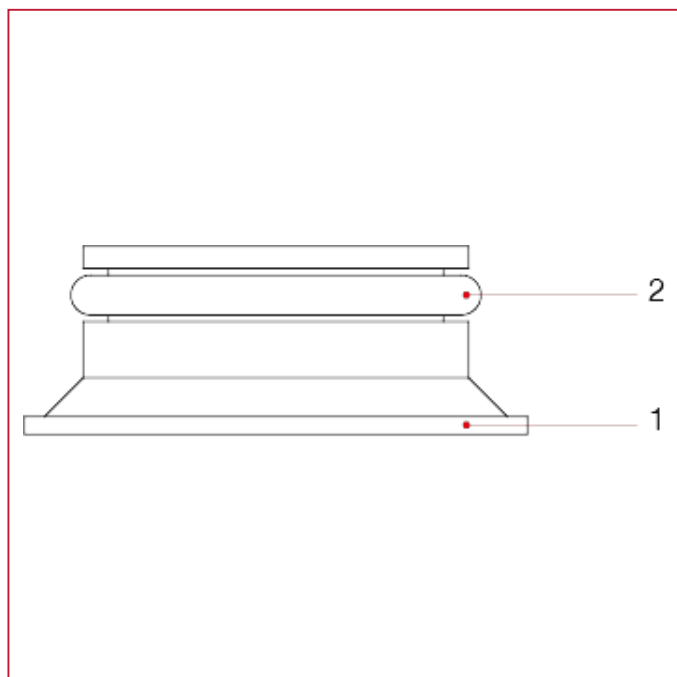


DN	20
A	23
B	8,5
C	17,5



TWO-PIPE VALVES FOR PANEL RADIATORS

MATERIALS



POS.	DESCRIPTION	N.	MATERIAL
1	Liner	1	Nylon
2	O-ring	1	EPDM



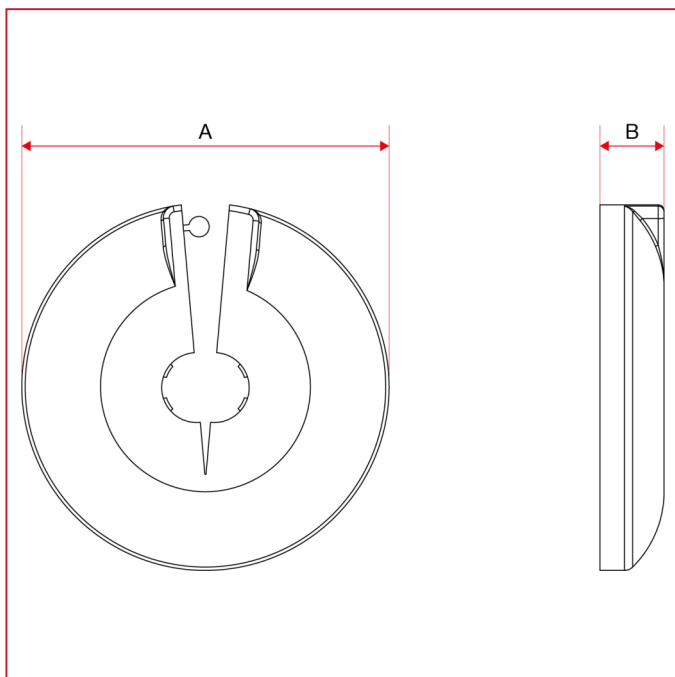
TWO-PIPE VALVES FOR PANEL RADIATORS

286 Plastic rosette



MEASURE	CODE	PACKING
12	2860012	25/300
14	2860014	25/300
15	2860015	25/300
16	2860016	25/300
18	2860018	25/300

OVERALL DIMENSIONS

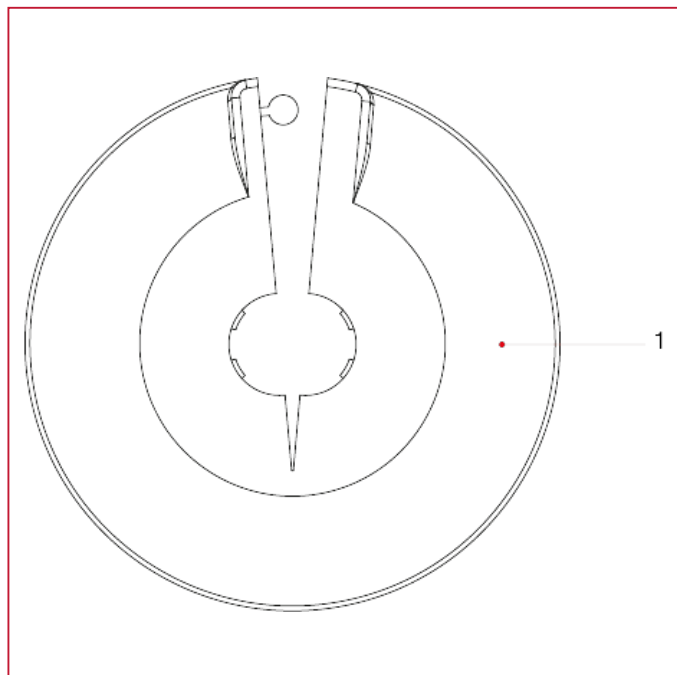


	12	14	15	16	18
A	63	63	63	63	63
B	11	11	11	11	11



TWO-PIPE VALVES FOR PANEL RADIATORS

MATERIALS



POS.	DESCRIPTION	N.	MATERIAL
1	Cover-plate	1	Polypropylene



ITAP S.p.A.
Via Ruca 19
25065 Lumezzane
Brescia (ITALY)
Tel 030 8927011
Fax 030 8921990
www.itap.it - info@itap.it

We reserve the right to make improvements and changes to the products described herein and to the relative technical data, at any time and without forewarning.

rev. 20250402