

## RAP 80: Selector relay

Used to select the smallest or largest of up to four pressure signals. Conforms to the regulations on pressure equipment (97/23/EG Art. 3.3).

Housing of thermoplastic; front plate embossed with connection diagram and description of operation. Suitable for mounting on walls or rails (as per C EN 50024, C EN 50022; see *Accessories*). Compressed-air connection Rp 1/8 female thread; two stepped push-on connectors for soft plastic tubing of internal diameter 4 or 6 mm.

Type	Description	Air output	Air consumption	Weight kg
<b>RAP 80 F002</b>	minimum selection	400 l <sub>n</sub> /h	6 l <sub>n</sub> /h	0.15
<b>RAP 80 F003</b>	maximum selection	400 l <sub>n</sub> /h	2 l <sub>n</sub> /h	0.15

Supply pressure <sup>1)</sup>	1.3 bar ± 0.1	Connection diagram	F002	<a href="#">A02896</a>
Input pressure	0...1.4 bar		F003	<a href="#">A02897</a>
Output pressure	0...1.4 bar	Dimension drawing		<a href="#">M297240</a>
Permissible ambient temp.	0...55 °C	Fitting instructions		<a href="#">MV 505098</a>



T03083



Y03181

### Accessories

**0296936 000\*** Fixing bracket for rail EN 50022 35 × 7.5 and 35 × 15

<sup>\*)</sup> Dimension drawing or wiring diagram are available under the same number

<sup>1)</sup> See Section 60 on regulations concerning the quality of supply air, especially at low ambient temperatures.

## Operation

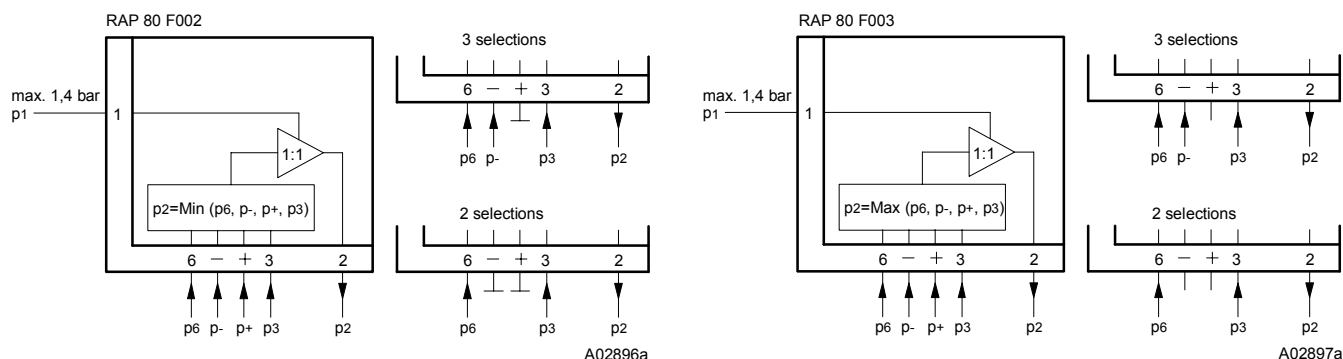
### Type F002

The smallest of up to four pressure signals is transmitted. If only 2 or 3 pressures are used, then the spare connections must be blocked off.

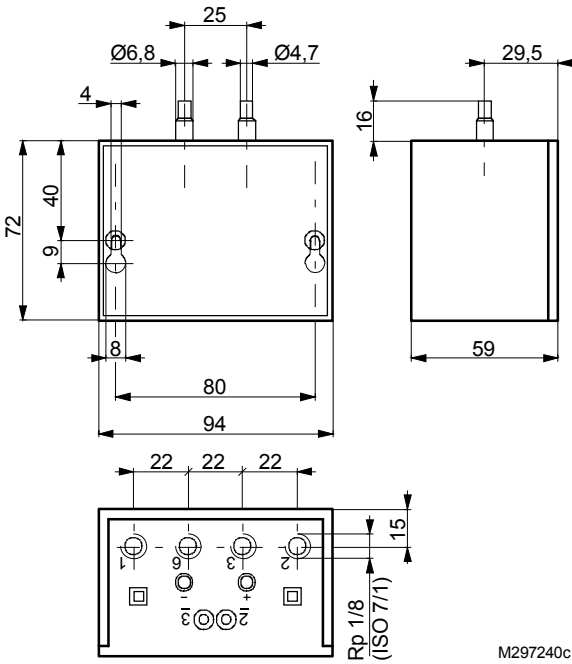
### Type F003

The largest of up to four pressure signals is transmitted. If only 2 or 3 pressures are used, then the spare connections must be left open.

## Connection diagrams



Dimension drawing



Accessories

