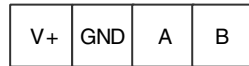
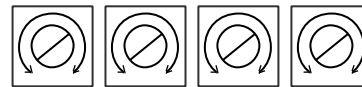
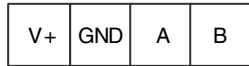


Anschlussplan:  
siehe ss\_1433 in  
der Montage- und  
Betriebsvorschrift  
Ihres Gerätes.



MODE

ADDRESS



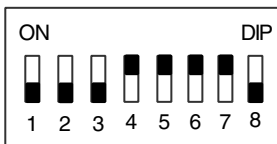
°C      r.H.

offset

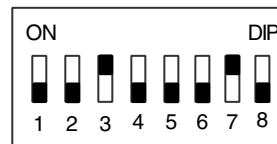
Insgesamt maximal 6 KWL-FTF eC Sensoren möglich.  
Bitte Anschlussplan ss\_1433 beachten.

### Modbus Adressbereich Feuchte 30 - 35

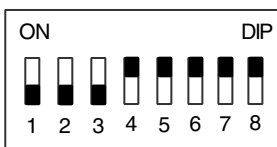
Jede Adresse darf nur einmal  
verwendet werden



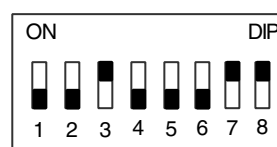
Default Einstellung:  
Entspricht 30



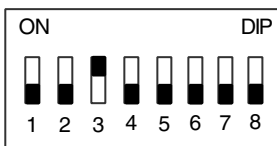
Entspricht 34



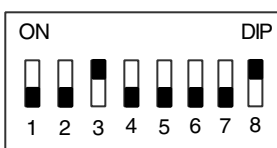
Entspricht 31



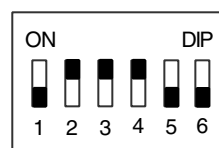
Entspricht 35



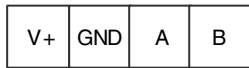
Entspricht 32



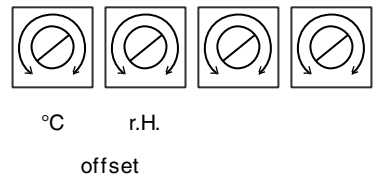
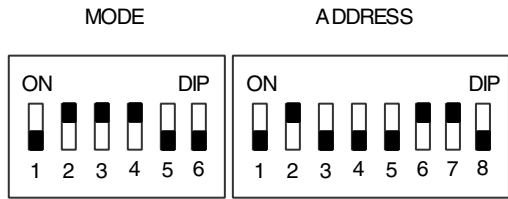
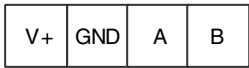
Entspricht 33



Mode: Interne Einstellung  
nicht verändern



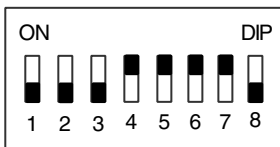
Wiring diagram: see ss\_1433 in the installation and operating instructions for your unit.



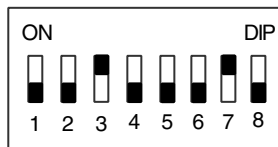
Maximum of 6 KWL-FTF eC sensors possible.  
Please observe wiring diagram ss\_1433.

**Modbus address range humidity**  
**30 - 35**

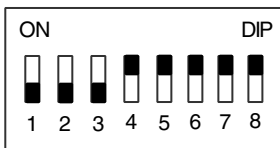
Each address may only be used once



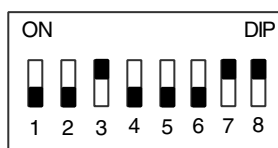
Default setting:  
Corresponds to 30



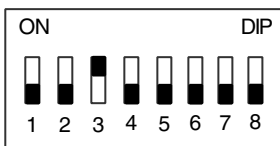
Corresponds to 34



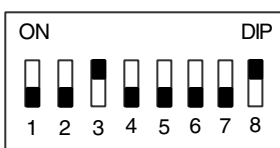
Corresponds to 31



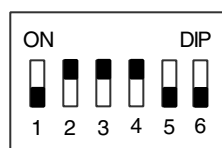
Corresponds to 35



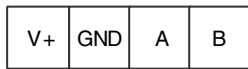
Corresponds to 32



Corresponds to 33



Mode: Do not change internal setting



MODE

ADDRESS

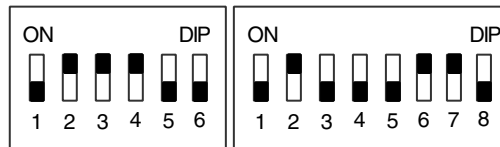
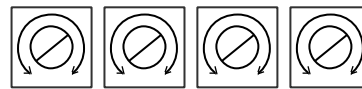
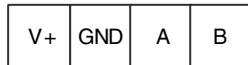


Schéma de câblage :  
voir ss\_1433 dans les  
instructions d'installation  
et d'utilisation de votre  
appareil.

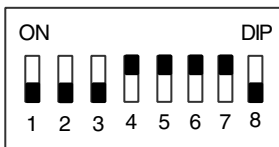


°C      r.H.  
offset

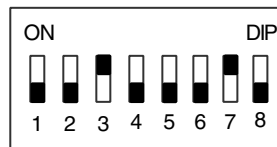
Un total de 6 capteurs eC KWL-FTF maximum est possible.  
Veuillez observer le schéma de connexion ss\_1433.

### Gamme d'adresses Modbus Humidité 30 - 35

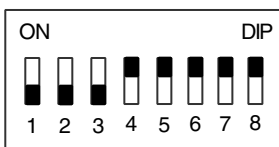
Chaque adresse ne peut être utilisée  
qu'une seule fois



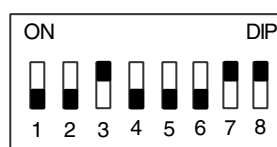
Réglage par défaut :  
Correspond à 30



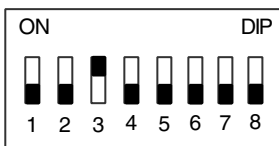
Correspond à 34



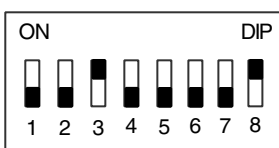
Correspond à 31



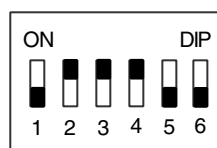
Correspond à 35



Correspond à 32



Correspond à 33



Mode : Ne pas modifier le  
réglage interne